

eYe Grabber™ DVB-T+H

Small, Portable, USB Powered, Frequency Agile, DVB-T and DVB-H with L Band Out Modulator with USB or IP Input for the Real Time Output of Live or Stored HD Streams Coming Via IP, ASI, or Local Hard Drive to IRD's and Set Top Boxes Equipped with Built-in DVB-T+H Tuners. Includes Transport Stream Player with Scheduling. Inexpensive and Easy to Use Device for Use in Development Labs and for Technology Demonstration Purposes.



Features

- Supports captured file play, live from external source through ASI or IP input
- Input: IP, DVB-ASI, USB, or SMPTE 310M
- Output: DVB-T, DVB-H, or DVB-ASI
- Includes ASI port for simultaneous ASI and RF output if TS is pulled from hard drive
- Frequency agile
- 54 MHz and up complete VHF/UHF RF out
- Support for L Band
- Covers 55-860 and 1036-1750 MHz
- Supports 6, 7, or 8 MHz modes
- DVB-H mode supports non hierarchical inputs with 2K/4K/8K modes
- On board channel selectable RF output up-converter Programmable RF output level (0.1 dB step)
- Can superposition white noise over modulated signal and control the output C/N ratio
- Feeds either an antenna or coax cable
- Field upgradeable – can be reprogrammed to add other profiles
- Playout Scheduler – schedule tasks (5 maximum) to run daily, weekly or monthly at a certain time
- Ships with Windows® 7, XP, based GUI
- Linux® and Windows® SDK's available for customization
- Customer oriented API is also available
- Sample transport streams available
- 0dBm amplifier included with 0.1 dB attenuation
- Option for Multi Function product that accepts other modulations including DVB-T2, 8VSB, QAM, ATSC M/H, DVB-C2, DVB-S, DVB-S2, CMMB, ISDB-T, ISDB-S, etc.
- Special Bundle Prices for multiple modulations

Applications

- Digital signage
- In Store Demo of plasma televisions
- Test Equipment for RF demodulators
- Hotel and Lodging video systems

Overview

RF modulators convert video to RF (radio frequency) so the video can be transmitted to a television via its RF input. DVB-T (Digital Video Broadcasting – Terrestrial) is the European standard for broadcasting digital TV “over the air”. DVB-H is the standard for mobile TV in Europe and many other parts of the world. L-Band is the area of the RF spectrum between 950 MHz and 2100 MHz, which is reserved for mobile communications.

The eYe Grabber™ DVB-T+H is a software definable modulator with a frequency agile modulator that sends live or recorded video streams to multiple HD monitors via inexpensive RF over coaxial cable. With its included software, one can create a powerful signage server.

The eYe Grabber DVB-T+H is ideal for closed circuit video systems. For example, a company exhibiting at a trade show can pull video from a computer hard drive, connect the eYe Grabber DVB-T+H to the computer via the USB port, and transmit video simultaneously to lots of HD monitors within the exhibit via RF cabling. Or, retailers can install one unit each at each store, send regularly updated video from a satellite feed or over IP, and have it play out on multiple HD monitors at each location. It's also ideal for generating RF signals for field testing and laboratory applications.

The input can be IP, USB, or DVB-ASI, single or multi program transport streams.

Customers can purchase licenses for additional profiles and upgrade the unit immediately. The compact eYe Grabber DVB-T+H can interface via an antenna or coaxial cable.



Computer Modules, Inc.

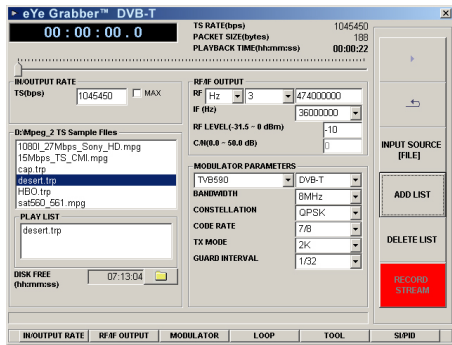
11409 West Bernardo Court

San Diego, CA 92127

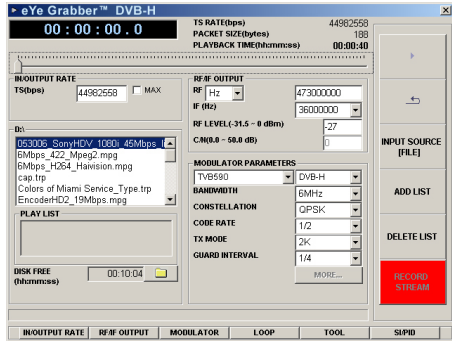
Tel: 858-613-1818 Fax: 858-613-1815

www.dveo.com

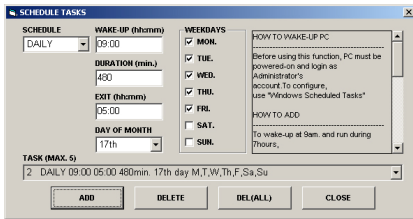
eYe Grabber™ DVB-T+H GUIs



Main GUI – DVB-T



Main GUI – DVB-H



Playout Scheduler

Product Views



Front



Back

USB Input/Output Power On/Off Switch

Ordering Information

eYe Grabber DVB-T+H

Note: Software ships with eYe Grabber at no cost.

Note: This unit is upgradeable with all other modulations, like DVB-T2, 8VSB, QAM, ATSC M/H, DVB-C2, DVB-S, DVB-S2, CMMB, DTMB, T-DMB, ISDB-T, ISDB-S, etc.

© 2012 Computer Modules, Inc. DVEO and eYe Grabber are trademarks of Computer Modules, Inc. All other trademarks and registered trademarks are the properties of their respective owners. All rights reserved. Specifications are subject to change without notice.

Specifications

Inputs/Outputs

Input	IP, USB, DVB-ASI, SMPTE 310M, or stored transport stream
Output	DVB-T, DVB-H, or DVB-ASI
RF Output	Freq: VHF/UHF 55~867 MHz L-BAND 956~2036 MHz Level: VHF/UHF -31.5 to 0 dBm L-BAND -31.5 to -20 dBm Freq accuracy: +/-5 KHz max Attenuation step: 0.1 dB Phase noise <-90dBc/Hz @ 10 KHz RF step size: 50 KHz step
Bit Rate	Up to 90 Mbps
Drivers	32 and 64 bit Windows® 7, XP, 2000, 32 and 64 bit Vista, WDM, and Linux®
Connectors	75 Ohm BNC

DVB-T+H Specifications

Standard	ETSI EN300744 v1-4-1 compatible Non-hierarchical single program mode
Punctured Code Rate	1/2, 2/3, 3/4, 5/6, 7/8
Constellation	QPSK, 16-QAM, 64-QAM
Transmission Modes	2k/4k/8k mode selectable; 4k mode only – DVB-H
Guard Interval	1/4, 1/8, 1/16, 1/32 selectable
In-depth Interleaving	Only for DVB-H
Bandwidth	5/6/7/8 MHz mode selectable; 5 MHz only for DVB-H

Physical & Power

Dimensions	Width: 5.83 inches (148 mm) Length: 9.33 inches (237 mm) Height: 1.3 inches (33 mm)
Weight	1.2 lbs. (544 grams)
Power	External 19V DC power supply
Operating Temp.	32° to 113° F (0°C to 45°C)
Humidity	To 85% Non-condensing relative
Conformities	FCC, UL, RoHS, CE Mark



Computer Modules, Inc.

11409 West Bernardo Court

San Diego, CA 92127

Tel: 858-613-1818 Fax: 858-613-1815

www.dveo.com