

# eYe Grabber™ DVB-S+S2

Small, Portable, USB Powered, Frequency Agile, VHF/UHF DVB-S+S2 L Band Modulator with USB or IP Input for the Real Time Output of Live or Stored HD Streams Coming Via IP, ASI, or Local Hard Drive to IRD's and Set Top Boxes Equipped with Built-in DVB -S+S2 Tuners. Includes Transport Stream Player with Scheduling. Inexpensive and Easy to Use Device for Use in Development Labs and for Technology Demonstration Purposes.



DVB  
Digital Video  
Broadcasting

## Features

- Supports captured file play, live from external source through ASI or IP input
- Input: IP, DVB-ASI, USB, or SMPTE 310M
- Output: DVB-S, DVB-S2, or DVB-ASI
- Includes ASI port for simultaneous ASI and RF output if TS is pulled from hard drive
- Frequency agile
- On board channel selectable RF output up-converter
- L band out (1036-1700 MHz) with Punctured Trellis Coding: Select: (1/2, 2/3, 3/4, 5/6, 7/8)
- ECC: Reed Solomon (204, 188, T=8) encoding
- ETS 302 307 standard compliant
- 956-1750 MHz
- QPSK, 8PSK, 16APSK, 32APSK
- Programmable RF output level (0.1 dB step)
- Can superposition white noise over modulated signal and control the output C/N ratio
- Feeds either an antenna or coax cable
- Field upgradeable – can be reprogrammed to add other profiles
- Playout Scheduler – schedule tasks (5 maximum) to run daily, weekly or monthly at a certain time
- Ships with Windows® 7, XP based GUI
- Linux® and Windows® SDK's available for customization
- Customer oriented API is also available
- Sample transport streams available
- 0dBm amplifier included with 0.1 dB attenuation
- Option for Multi Function product that accepts other modulations including 8VSB, QAM, ATSC M/H, DVB-C2, DVB-H, DVB-T, DVB-T2, CMMB, ISDB-T, ISDB-S, etc.
- Special Bundle Prices for multiple modulations

## Applications

- Digital signage
- In Store Demo of plasma televisions
- Test Equipment for RF demodulators
- Hotel and Lodging video systems

## Overview

RF modulators convert video to RF (radio frequency) so the video can be transmitted to a television via its RF input. DVB-S and DVB-S2 are the digital broadcast standards used for satellite broadcasting worldwide. DVB-S2 is the second generation of DVB-S, with enhanced modulation up to 32APSK.

The eYe Grabber™ DVB-S+S2 is a software definable modulator with a frequency agile modulator that sends live or recorded video streams to multiple HD monitors via inexpensive RF over coaxial cable. With its included software, one can create a powerful signage server.

The eYe Grabber DVB-S+S2 is ideal for closed circuit video systems. For example, a company exhibiting at a trade show can pull video from a computer hard drive, connect the eYe Grabber DVB-S+S2 to the computer via the USB port, and transmit video simultaneously to lots of HD monitors within the exhibit via RF cabling. Or, retailers can install one unit each at each store, send regularly updated video from a satellite feed or over IP, and have it play out on multiple HD monitors at each location. It's also ideal for generating RF signals for field testing and laboratory applications.

The input can be IP, USB, or DVB-ASI, single or multi program transport streams.

Customers can purchase licenses for additional profiles and upgrade the unit immediately. The compact eYe Grabber DVB-S+S2 can interface via an antenna or coaxial cable.

**DVEO**  
Broadcast Division

Computer Modules, Inc.

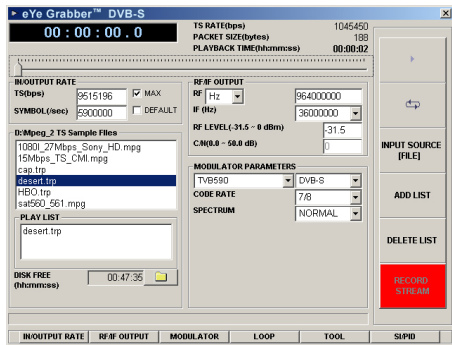
11409 West Bernardo Court

San Diego, CA 92127

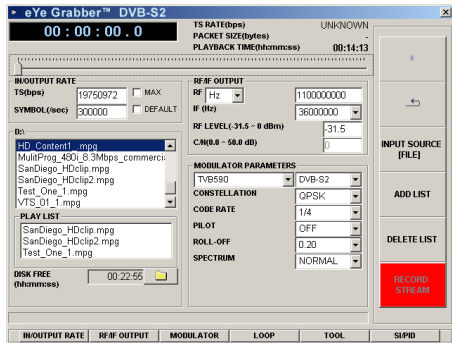
Tel: 858-613-1818 Fax: 858-613-1815

[www.dveo.com](http://www.dveo.com)

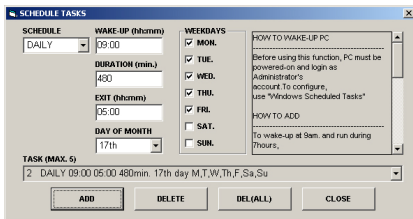
# eYe Grabber™ DVB-S+S2 GUIs



**Main GUI – DVB-S (QPSK)**

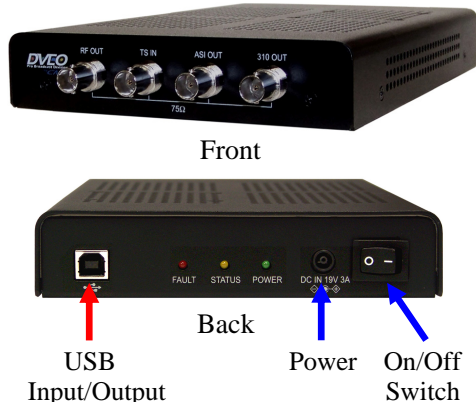


**Main GUI – DVB-S2**



**Playback Scheduler**

## Product Views



Front

Back

USB

Input/Output

Power

On/Off  
Switch

## Ordering Information

eYe Grabber DVB-S+S2

Note: Software ships with eYe Grabber at no cost.

Note: This unit is upgradeable with all other modulations, like 8VSB, QAM, ATSC M/H, DVB-C2, DVB-H, DVB-T, DVB-T2, CMMB, ISDB-T, ISDB-S, etc.

© 2012 Computer Modules, Inc. DVEO and eYe Grabber are trademarks of Computer Modules, Inc. All other trademarks and registered trademarks are the properties of their respective owners. All rights reserved. Specifications are subject to change without notice.

## Specifications

### Inputs/Outputs

Input	IP, USB, DVB-ASI, SMPTE 310M, or stored transport stream
Output	DVB-S, DVB-S2, or DVB-ASI
RF Output	Freq: VHF/UHF 55~867 MHz L-BAND 956~2036 MHz Level: VHF/UHF -31.5 to 0 dBm L-BAND -31.5 to -20 dBm Freq accuracy: +/-5 KHz max Attenuation step: 0.1 dB Phase noise <-90dBc/Hz @ 10 KHz RF step size: 50 KHz step
Bit Rate	Up to 90 Mbps
Drivers	32 and 64 bit Windows® 7, XP, 2000, 32 and 64 bit Vista, WDM, and Linux®
Connectors	75 Ohm BNC

### DVB-S (QPSK) Specifications

Standard	ETSI EN 300421 (DVB-S) compliant
Code Rates	1/2, 2/3, 3/4, 5/6, 7/8
Symbol Rates	1~45M symbols/s
DC Blocking Voltage	50V max

### DVB-S2 (QPSK) Specifications

Standard	ETS 302 307 compliant
LDPC Code	1/4, 1/3, 2/5, 1/2, 3/5, 2/3, 3/4, 4/5, 5/6, 8/9, and 9/10
Modulation Modes	QPSK, 8PSK, 16APSK, 32APSK
Baseband Shaping Filter	Roll-off 0.20, 0.25, 0.35, or None, selectable
Symbol Rates	2~45 Msps without shaping filter 2~22 Msps with shaping filter
DC Blocking Voltage	50V max

### Physical & Power

Dimensions	Width: 5.83 inches (148 mm) Length: 9.33 inches (237 mm) Height: 1.3 inches (33 mm)
Weight	1.2 lbs. (544 grams)
Power	External 19V DC power supply
Operating Temp.	32° to 113° F (0°C to 45°C)
Humidity	To 85% Non-condensing relative humidity
Conformities	FCC, UL, RoHS, CE Mark



Computer Modules, Inc.

11409 West Bernardo Court

San Diego, CA 92127

Tel: 858-613-1818 Fax: 858-613-1815

[www.dveo.com](http://www.dveo.com)