

eYe Grabber™ CMMB

Small, Portable, USB Powered, Frequency Agile MultiMode VHF/UHF/L Band CMMB Test Modulator for the Real Time Output of Live or Stored HD Streams Coming Via IP, ASI, or Local Hard Drive to Be Sent to Coax RF CCTV Systems. Includes Transport Stream Player with Scheduling. Inexpensive and Easy to Use Device for Use in Development Labs and for Technology Demonstration Purposes.



Features

- Supports captured file play, live from external source through ASI or IP input
- Input: IP, DVB-ASI, USB, or SMPTE 310M
- Output: CMMB or DVB-ASI
- Includes ASI port for simultaneous ASI and RF output if TS is pulled from hard drive
- Frequency agile
- GY/T 220.1-2006 compliant
- RF Output Frequency: 174-230 MHz, 470-854 MHz
- Programmable RF output level (0.1 dB step)
- Can superposition white noise over modulated signal and control the output C/N ratio
- Feeds either an antenna or coax cable
- Field upgradeable – can be reprogrammed to add other profiles
- Playout Scheduler – schedule tasks (5 maximum) to run daily, weekly or monthly at a certain time
- Ships with Windows® 7, XP based GUI
- Linux® and Windows® SDK's available for customization
- Customer oriented API is also available
- Sample transport streams available
- 0dBm amplifier included with 0.1 dB attenuation
- Option for Multi Function product that accepts other modulations including 8VSB, QAM, ATSC M/H, DVB-C2, DVB-H, DVB-S/S2, DVB-T, DVB-T2, ISDB-T, ISDB-S, T-DMB, etc.
- Special Bundle Prices for multiple modulations

Applications

- Validating CMMB reception
- Digital signage
- Private "In House" TV operations
- Engineering labs
- HD monitor testing

Overview

RF modulators convert video to RF (radio frequency) so the video can be transmitted to a television via its RF input. CMMB (China Mobile Multimedia Broadcasting) is the mobile TV broadcasting standard used in China. CMMB uses 2635-2660 and 470-862 MHz.

The eYe Grabber™ CMMB is a software definable modulator with a frequency agile modulator that sends live or recorded video streams to multiple HD monitors via inexpensive RF over coaxial cable. With its included software, one can create a powerful signage server.

The eYe Grabber CMMB is ideal for closed circuit video systems. For example, a company exhibiting at a trade show can pull video from a computer hard drive, connect the eYe Grabber CMMB to the computer via the USB port, and transmit video simultaneously to lots of HD monitors within the exhibit via RF cabling. Or, retailers can install one unit each at each store, send regularly updated video from a satellite feed or over IP, and have it play out on multiple HD monitors at each location. It's also ideal for generating RF signals for field testing and laboratory applications.

The input can be IP, USB, or DVB-ASI, single or multi program transport streams.

Customers can purchase licenses for additional profiles and upgrade the unit immediately. The compact eYe Grabber CMMB can interface via an antenna or coaxial cable.

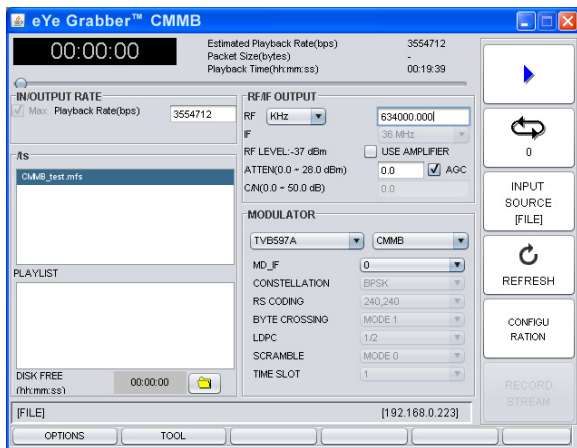
DVEO
Broadcast Division

Computer Modules, Inc.
11409 West Bernardo Court
San Diego, CA 92127

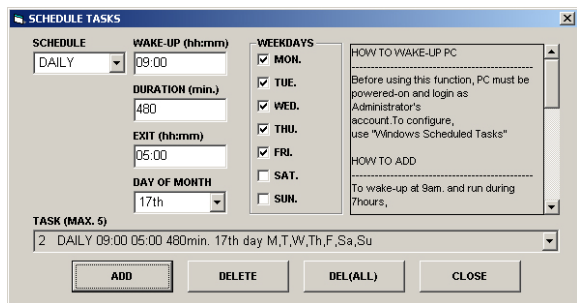
Tel: 858-613-1818 Fax: 858-613-1815

www.dveo.com

eYe Grabber™ CMMB GUIs



Main GUI



Playout Scheduler GUI

Product Views



Front



Back

↑
USB
Input/Output

↑ Power ↑ On/Off
Switch

Ordering Information

eYe Grabber CMMB

Note: Software ships with eYe Grabber at no cost.

Note: This unit is upgradeable with all other modulations, like 8VSB, QAM, ATSC M/H, DVB-C2, DVB-H, DVB-S/S2, DVB-T+H, DVB-T2, T-DMB, DTMB, ISDB-T, ISDB-S, etc.

© 2012 Computer Modules, Inc. DVEO and eYe Grabber are trademarks of Computer Modules, Inc. All other trademarks and registered trademarks are the properties of their respective owners. All rights reserved. Specifications are subject to change without notice.

Specifications

Inputs/Outputs

Input	IP, USB, DVB-ASI, SMPTE 310M, or stored transport stream
Output	CMMB or DVB-ASI
RF Output	Freq: 174~230 MHz 470~854 MHz Level: VHF/UHF -31.5 to 0 dBm L-BAND -31.5 to -20 dBm Freq accuracy: +/-5 KHz max Attenuation step: 0.1 dB Phase noise <-90dBc/Hz @ 10 KHz RF step size: 50 KHz step
Bit Rate	Up to 38 Mbps
Drivers	32 and 64 bit Windows® 7, XP, 2000, 32 and 64 bit Vista, WDM, and Linux®
Connectors	75 Ohm BNC

CMMB Specifications

Standard	GY/T 220.1-2006 compliant
Constellations	BPSK, QPSK, 16QAM
Subcarrier	4096/8MHz
Modulation	*CMMB modulation from DVB-ASI input is not supported *CMMB stream should have control information table (CMCT)

Physical & Power

Dimensions	Width: 5.83 inches (148 mm) Length: 9.33 inches (237 mm) Height: 1.3 inches (33 mm)
Weight	1.2 lbs. (544 grams)
Power	External 19V DC power supply
Operating Temp.	32° to 113° F (0°C to 45°C)
Humidity	To 85% Non-condensing relative humidity
Conformities	FCC, UL, RoHS, CE Mark



Computer Modules, Inc.

**11409 West Bernardo Court
San Diego, CA 92127**

Tel: 858-613-1818 Fax: 858-613-1815

www.dveo.com