

TVB593 DVB-T2

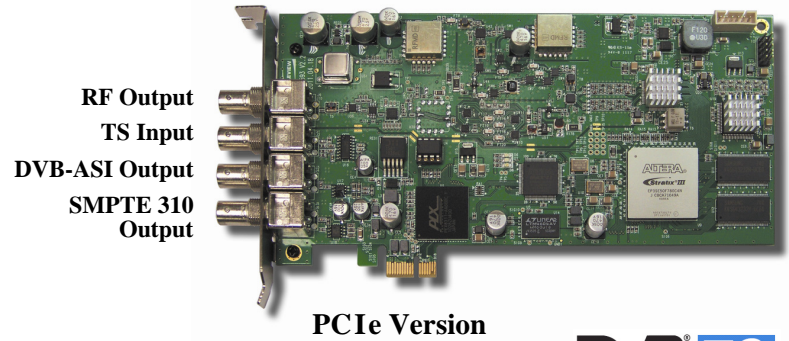
ETSI Standard Compliant DVB-T2 Transport Stream Modulator with DVB-ASI or PCIe Bus Input, Frequency Agile, Field Upgradeable with Other Modes. (With Sophisticated User Interface with Scheduling). Supports T2MI Multiplexed Streams. RF Output. For Digital Signage, STB Testing, and Laboratory Applications. This Device Feeds Either an Antenna or Coax Cable.

Features

- Transmits real time video or stored video from the server hard drive and sends it to multiple HD monitors simultaneously
- Input: Transport streams via PCIe bus or BNC bracket connectors
- Output: DVB-T2
- DVB-ASI output for monitoring
- Includes ASI port for simultaneous ASI and RF output if TS is pulled from hard drive
- Frequency agile
- ETSI EN302 755 standard compliant
- L1 Modulation: QPSK, 16 QAM, 64 QAM, 256 QAM
- PLP Modulation: QPSK, 16 QAM, 64 QAM, 256 QAM
- On board channel selectable RF output up-converter
- Programmable RF output level (0.1 dB step)
- Can superposition white noise over modulated signal and control the output C/N ratio
- Feeds either an antenna or coax cable
- Field upgradeable – can be reprogrammed to add other profiles
- Supplied with Windows® based Transport Stream Player application with Scheduler
- Playout Scheduler – schedule tasks (5 maximum) to run daily, weekly or monthly at a certain time
- Includes transport stream analyzer
- Freq Config GUI supported via Windows® 2000, Windows XP, Windows 7, Vista 32 bit, and Linux®
- Customer oriented API is also available
- Sample transport streams available
- 0dBm amplifier included

Applications

- Engineering labs
- In Store Demos of plasma televisions
- Digital Signage
- Test Equipment for RF demodulators
- Hotel and Lodging video systems



DVB T2

Overview

RF modulators convert a video signal to RF (radio frequency) so the video can be transmitted to a television via its RF input.

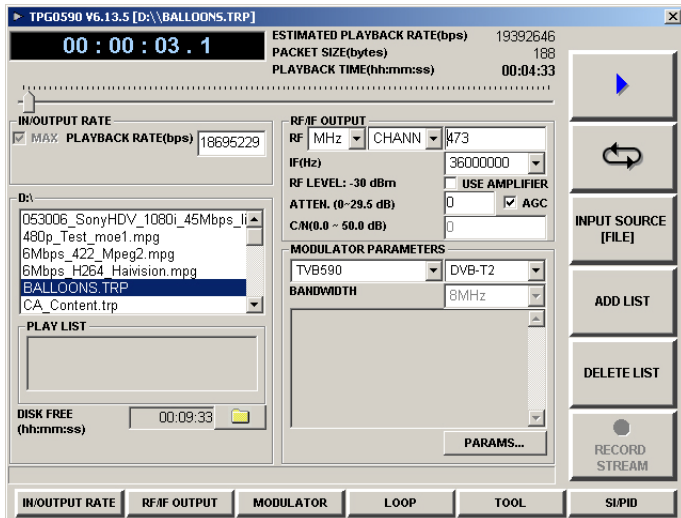
DVB-T2 (Digital Video Broadcasting – Second Generation Terrestrial) is the latest European standard for broadcasting digital TV “over the air”.

Our **TVB593 DVB-T2** modulator PCIe card transmits real time video or stored video from the server hard drive and sends it to multiple HD monitors simultaneously, using RF as a carrier. It also supports T2MI (DVB-T2 Modulator Interface) streams.

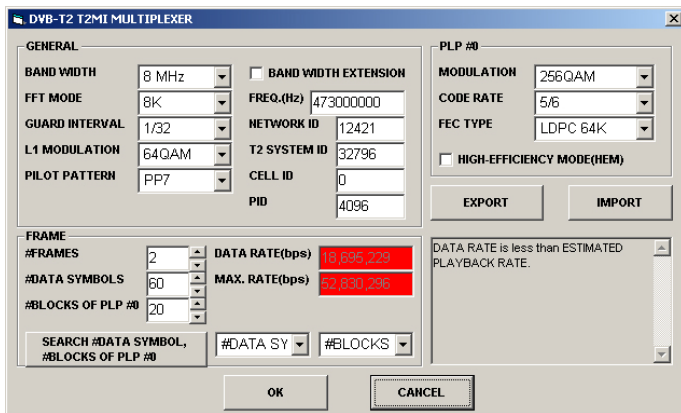
The TVB593 DVB-T2 can connect via an antenna or coaxial cable, and features RF output. It is suitable for set top box testing, DVB-T2 receiver testing, laboratory applications, digital signage, and video feeds in public areas such as hotels and trade shows.

This card is *field upgradeable* – you can purchase licenses for a wide variety of additional modulator profiles and upgrade the card immediately. Modulator profiles typically used in North America include QAM, ATSC M/H, and 8VSB. Modulator profiles typically used in Europe are DVB-T, DVB-T2, DVB-H, DVB-C2, DVB-S, and DVB-S2. Modulator profiles typically used in Asia are ISDB-T, ISDB-S, DTMB, CMMB, and T-DMB.

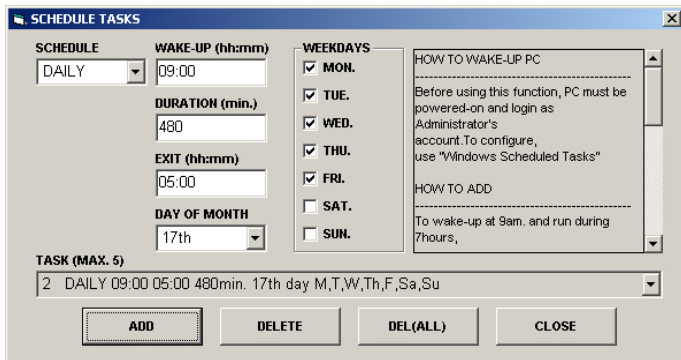
DVEO
Broadcast Division
Computer Modules, Inc.
11409 West Bernardo Court
San Diego, CA 92127
Tel: (858) 613-1818 Fax: (858) 613-1815
www.dveo.com



Main GUI – DVB-T2



DVB-T2 T2MI Multiplexer GUI



Playout Scheduler

Transport Stream Input	From Hard Disk through PCIe, or via BNC DVB-ASI connector
Bit Rate	Up to 90 Mbps
ASI/SMPTE 310M Input/Output	Connector: 75 ohm BNC
RF Output	Connector: 75 ohm BNC Freq: VHF/UHF 55~956MHz L-BAND 956~2150MHz Level: VHF/UHF 0dBm max, L-BAND -20 dBm max Freq accuracy: +/-5 KHz max Attenuation step: 0.1dB Phase noise <-90dBc/Hz @ 10 KHz RF step size: 50 KHz step (except for TDMB: 8 KHz step)
PCIe Bus	PCI express x1 compliant
Dimensions	HxWxL: 25 mm x 107 mm x 210 mm (.98 x 4.21 x 8.27 inches)
Drivers	Windows® 7 (32/64 bit), XP (32/64 bit), 2000, Vista (32/64 bit), WDM, and Linux®
Operating Conditions	Temperature: 0~45° C (32 to 113 ° F) Humidity: 0~85%
Conformities	FCC, UL, RoHS, CE Mark

DVB-T2 Specifications

Standard	ETSI EN302 755 compliant
MISO/SISO	SISO
Constellation	QPSK, 16-QAM, 64-QAM
FFT Size	1K, 2K, 4K, 8K (Normal and extended)
Guard Interval	1/4, 1/8, 1/16, 1/32, 1/128, 19/128, 19/256
PAPR	None
L1 Modulation	BPSK, QPSK, 16 QAM, 64 QAM
Pilot Pattern	PP1, PP2, PP3, PP4, PP5, PP6, PP7, PP8
Number of RF (TFS)	Single
FEF	None
Number of PLP	Single PLP
PLP Code Rate	1/2, 3/5, 2/3, 3/4, 4/5, 5/6
PLP Modulation	QPSK, 16 QAM, 64QAM, 256 QAM
Constellation rotation	None
PLP FEC Type	16K, 64 K
Frame Interval	'1'
Time Interleaving Length	'0'
Time Interleaving Type	'0'

*DVB-T2 modulation from DVB-ASI input is not supported.
*Supports T2MI multiplexed stream.

Ordering Info

TVB593 DVB-T2

© 2012 Computer Modules, Inc. DVEO and Computer Modules are trademarks of Computer Modules, Inc. All other trademarks and registered trademarks are the properties of their respective owners. All rights reserved. Specifications are subject to change without notice.



Computer Modules, Inc.

11409 West Bernardo Court

San Diego, CA 92127

Tel: (858) 613-1818 Fax: (858) 613-1815

www.dveo.com