

# TVB593 DVB-T+H

**DVB-T and DVB-H with L Band Out  
Transport Stream Modulator with DVB-ASI  
Input and Sophisticated User Interface.  
Frequency Agile, Field Upgradeable with  
Other Modes. Supports 6, 7 or 8 MHz Modes.  
Transport Stream Input via PCIe or PCI Bus  
or from BNC Connector on the Bracket. RF  
Output. For Digital Signage, STB Testing, and  
Laboratory Applications. This Device Feeds  
Either an Antenna or Coax Cable.**

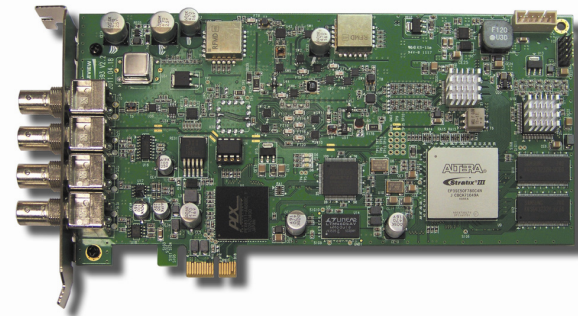
## Features

- Transmits real time video or stored video from the server hard drive and sends it to multiple HD monitors simultaneously
- Input: IP, DVB-ASI or SMPTE 310M transport streams via PCIe bus or BNC bracket connector
- Output: DVB-T or DVB-H
- Includes ASI port for simultaneous ASI and RF output if TS is pulled from hard drive
- Frequency agile
- 54 MHz and up complete VHF/UHF RF out
- Support for L Band
- Covers 55-860 and 1036-1750 MHz
- Supports 6, 7, or 8 MHz modes
- DVB-T mode supports non hierarchical inputs with 2K/4K/8K modes
- On board channel selectable RF output up-converter
- Programmable RF output level (0.1 dB step)
- Can superposition white noise over modulated signal and control the output C/N ratio
- Feeds either an antenna or coax cable
- Field upgradeable – can be reprogrammed to add other profiles
- Supplied with Windows® based Transport Stream Player application with Scheduler
- Payout Scheduler – schedule tasks (5 maximum) to run daily, weekly or monthly at a certain time
- Includes transport stream analyzer
- Freq Config GUI supported via Windows® 2000, Windows XP, Windows 7, Vista 32 bit, and Linux®
- Customer oriented API is also available
- Sample transport streams available
- 0dBm amplifier included

## Applications

- Engineering labs
- In Store Demos of plasma televisions
- Digital Signage
- Test Equipment for RF demodulators
- Hotel and Lodging video systems

RF Output  
TS Input  
DVB-ASI Output  
SMPTE 310  
Output



**DVB T**  
TERRESTRIAL

**DVB H**  
HANDHELD

## Overview

RF modulators convert a video signal to RF (radio frequency) so the video can be transmitted to a television via its RF input.

DVB-T (Digital Video Broadcasting – Terrestrial) is the European standard for broadcasting digital TV “over the air”. DVB-H is the standard for mobile TV in Europe and many other parts of the world. L-Band is the area of the RF spectrum between 950 MHz and 2100 MHz, which is reserved for mobile communications.

Our **TVB593 DVB-T+H** modulator PCIe or PCI card transmits real time video or stored video from the server hard drive and sends it to multiple HD monitors simultaneously, using RF as a carrier. The TVB593 DVB-T+H can connect via an antenna or coaxial cable, and features RF output.

It is suitable for set top box testing, DVB-T or DVB-H receiver testing, laboratory applications, digital signage, and video feeds in public areas such as hotels and trade shows.

This card is *field upgradeable* – you can purchase licenses for a wide variety of additional modulator profiles and upgrade the card immediately. Modulator profiles typically used in North America include QAM, ATSC M/H, and 8VSB. Modulator profiles typically used in Europe are DVB-T, DVB-T2, DVB-H, DVB-C2, DVB-S, and DVB-S2. Modulator profiles typically used in Asia are ISDB-T, ISDB-S, DTMB, CMMB, and T-DMB.

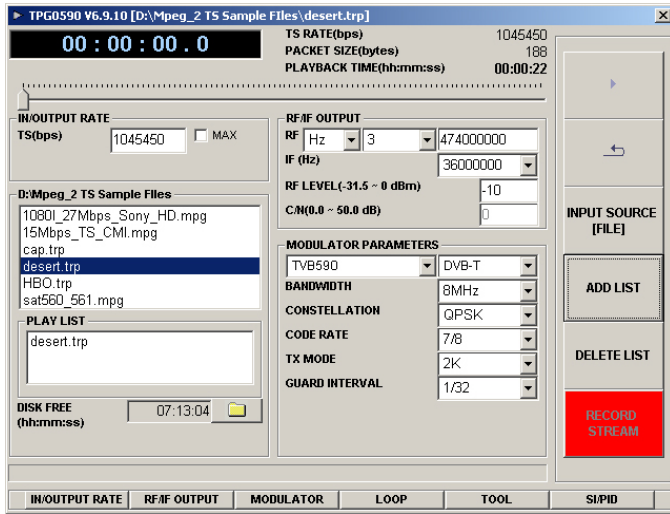
**DVEO**  
Broadcast Division

Computer Modules, Inc.

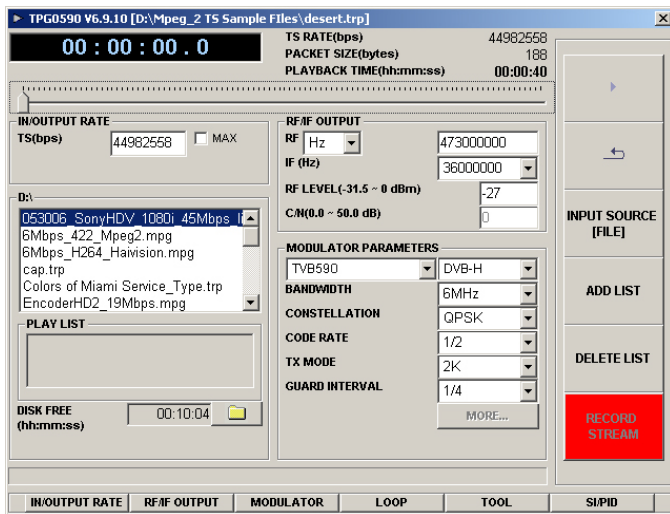
11409 West Bernardo Court  
San Diego, CA 92127

Tel: (858) 613-1818 Fax: (858) 613-1815

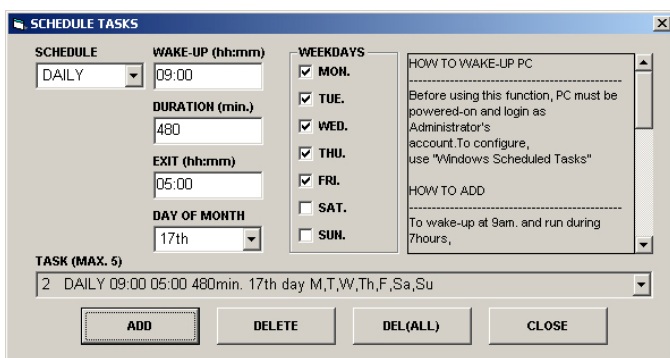
[www.dveo.com](http://www.dveo.com)



Main GUI – DVB-T



Main GUI – DVB-H



Playout Scheduler

Transport Stream Input	From Hard Disk through PCI or PCIe, or via BNC DVB-ASI connector
Bit Rate	Up to 90 Mbps
ASI/SMPTE 310M Input/Output	Connector: 75 ohm BNC
RF output	Connector: 75 ohm BNC Freq: VHF/UHF 55~867 MHz L-BAND 956~2036 MHz Level : VHF/UHF -31.5 to 0 dBm L-BAND -25 dBm max
PCI Bus	PCI version 2.1 compliant
PCIe Bus	PCI express x1 compliant
Dimensions	HxWxL: 25mm x 107mm x 210mm
Drivers	Windows® 7 (32/64 bit), XP (32/64 bit), 2000, Vista (32/64 bit), WDM, and Linux®
Conformities	FCC, UL, RoHS, CE Mark

DVB-T+H Specifications

Standard	ETSI EN300744 v1-4-1 compliant Non-hierarchical single program mode
Punctured Code Rate	1/2, 2/3, 3/4, 5/6, 7/8 selectable
Constellation	QPSK, 16-QAM, 64-QAM
Transmission Modes	2k/4k/8k mode selectable; 4k mode only – DVB-H
Guard Interval	1/4, 1/8, 1/16, 1/32 selectable
In-depth Interleaving	Only for DVB-H
Bandwidth	5/6/7/8 MHz mode selectable; 5 MHz only for DVB-H

Ordering Info

TVB593 DVB-T+H