

TAV900A/DVB-T

Broadcast Quality, Frequency Agile, DVB-T HDTV Receiver Demodulator with On Board HD or SD MPEG-2 TS Decoder with RF (DVB-T) or TS Input and MP@HL ASI, SDI, HD-SDI, Composite, or RGB Output. Dolby AC-3 and MPEG Audio Decoder with XLR Connectors. Ideal Receiver for Signal Monitoring in Small Spaces Such as ENG Trucks. Includes Very High Quality HD LCD Monitor. Features Many On Screen Diagnostics Displayed as Overlay.

Features

- RF input Signal via 75 ohm F-connector
- May choose digital stream from DVB-T and DVB-ASI signal
- On-screen transport stream diagnostics presented as overlay
- Selected digital stream is supplied in DVB-ASI and DVB-T format signal
- MPEG-2 MP@HL compliant video decoder supplies digital and analog video signal
- Digital video signal compliant with SMPTE-259M/SMPTE-292M (SDI) with embedded 2 channel audio (SMPTE-299M)
- Dolby AC-3 and MPEG-1/2 5.1 channel audio decoder
- Dolby Digital (AC-3) or PCM stereo audio selectable over BNC connector
- Dolby Pro Logic compatible stereo audio output on one XLR connector and one D-sub 9P connector
- Y/Pb/Pr and SDI video signal with 1080i/720p/480p/480i video mode
- NTSC/PAL video output available
- 4 channel audio level display on TFT-LCD monitor
- PSIP/EIA-608, 708 closed caption compliant
- 3 RU rack mountable frame
- Web-based remote management

Applications

- DVB-T receiver with monitor for OB vans
- HDTV receiver/demodulator
- Signal monitoring
- Standard definition MPEG-2 decoder



DVB T
TERRESTRIAL

DVB
Digital Video
Broadcasting

Overview

The DTV TAV900A/DVB-T is a broadcast quality, rack mountable, DVB-T off air receiver/demodulator and HD (high definition) and SD (standard definition) MPEG-2 decoder. It receives on-air terrestrial HDTV broadcasting, DVB-ASI, or DVB-T input. Video output is supplied in Y/Pb/Pr and composite video signals (NTSC or PAL) as well as SD/HD-SDI format with embedded audio.

Designed to support versatile forms of MPEG-2 and DVB-T transport stream signals, the TAV900A/DVB-T offers easy connection to various digital television signal sources and receivers.

The TAV900A/DVB-T includes an on-board sharp and clear LCD monitor and large stereo speakers for professional human monitoring of terrestrial HD video signals – whether they be 480i, 480p, 720p, or 1080i – and AC-3 or Dolby Pro-logic audio signals with 2 or 5 channel audio. The HD component output can drive larger displays.

The TAV900A/DVB-T features front panel controls and web-based remote management.

Audio support includes analog audio output (L, R) on XLR's. For Dolby Pro Logic audio output there is a front panel control to enable Pro Logic surround sound audio on the two XLR's. For users looking for digital audio via PCM or compressed audio, the output TS via the BNC connectors and the outputs here are enabled via the MAIN/AUDIO/DIGITAL LCD menu. The compressed audio on the BNC has a Dolby AC-3 with 5.1 channels.

DVEO
Broadcast Division

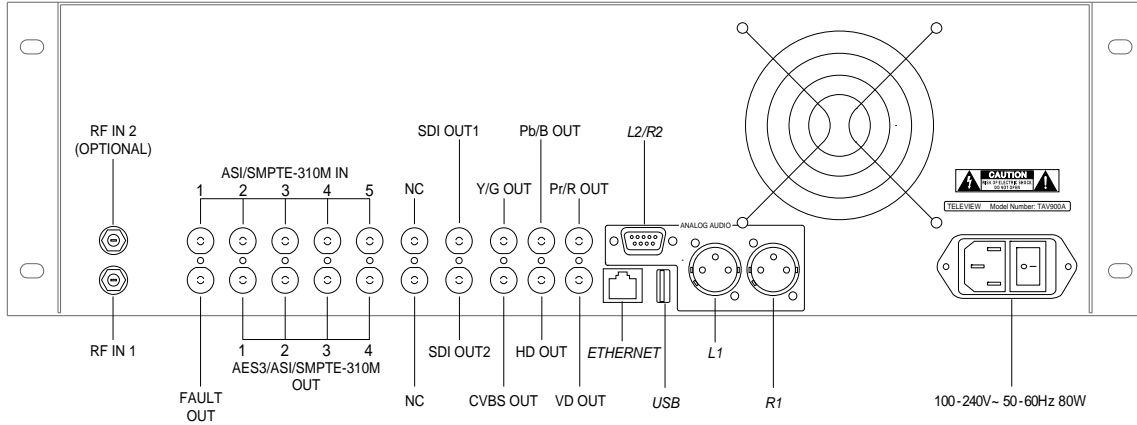
Computer Modules, Inc.
11409 West Bernardo Court
San Diego, CA 92127

Tel: (858) 613-1818 Fax: (858) 613-1815

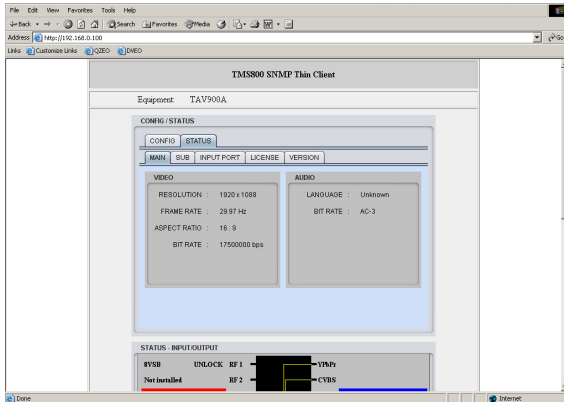
www.dveo.com

TAV900A/DVB-T

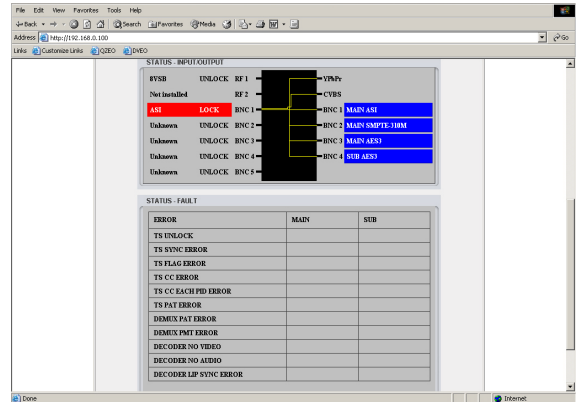
Rear View



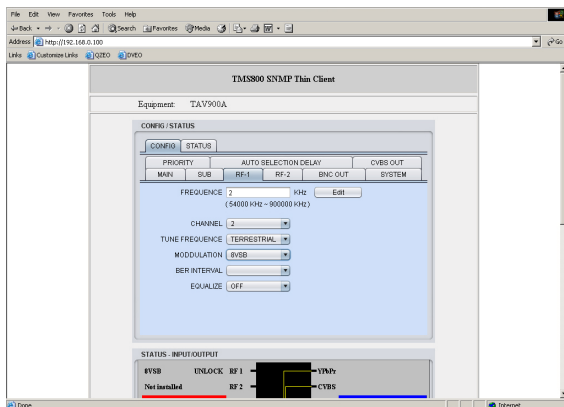
On Screen Displays



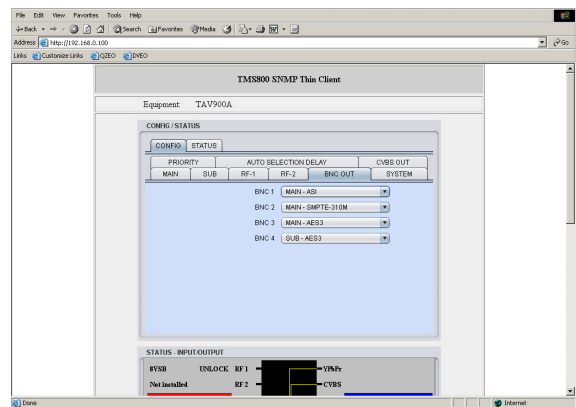
Main Status



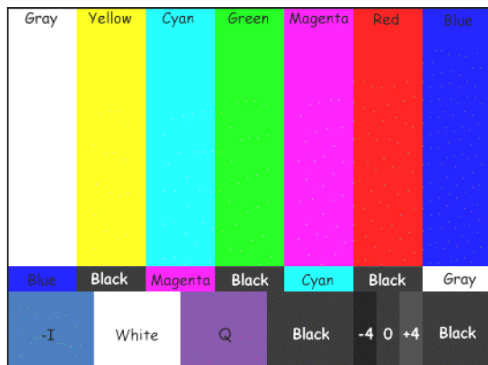
Input-Output Status



RF Configuration



BNC Out Configuration



Diagnosis Color Bar



Computer Modules, Inc.
11409 West Bernardo Court
San Diego, CA 92127

Tel: 858-613-1818 Fax: 858-613-1815

www.dveo.com

TA V900A/DVB-T

Specifications

Front Display/ Keys	
	800 x 480 TFT-LCD
	8 keys for Easy Control
	MUTE, MENU, SELECT, EXIT, and ARROW Keys
DVB-T RF Input	
Channel:	6, 7, 8 MHz RF Selectable
Connector:	2 x 75 Ohm F-type Connector (QPSK / DMB-T Option available)
Sensitivity	≥ 43.5 dBu V (VHF) ≥ 35.4 dBu V (VHF HIGH) ≥ 35.4 dBu V (VHF LOW)
TS Input	
Format:	DVB-T or DVB-ASI (Select ASI or 310M at front panel)
Connector:	75 ohm BNC
TS Output	
Format:	DVB-ASI
Connector:	75 ohm BNC
Audio Output	
Signal:	AES3-id (Select ASI or 310M or AES3-id output at front panel)
Connector:	75 ohm BNC
Format:	Dolby AC-3 audio with 5.1, MPEG1/2, PCM
1st Audio Output:	Connector: XLR connector (AES 3-id)
2nd Audio Output:	Connector: D-sub 9p connector

Digital Audio Output	Choose either PCM mode or COMPRESSED audio output mode for MAIN channel. The chosen audio mode is used for all BNC output ports. You can have PCM mode only for the SUB channel. You may have COMPRESSED audio out of MAIN channel over BNC port and PCM audio out of SUB channel over BNC port.
Component Video Output	
Formats:	1080i/720p/480p/480i
Connector:	BNC connector YPbPr/RGB Selectable
Composite Video Output	
Signal:	NTSC/PAL
Connector:	75 ohm BNC
Digital Video Output (SDI)	SMPTE299M/SMPTE292M with embedded audio
Ethernet	10/100 BT on RJ45
Stereo Speaker	Max 10W each
USB 1.1	Connector: Type "A"
Fault	Relay contact on signal loss
Network Management	NMS supported through SNMP
CPU and RAM	MIPS 300 MHz 32 bit RISC
Unit	3 RU 19-inch rackmountable
Operating Temp.	+0 ~ +45°C (32 to 113°F)
Operating Temp.	-20 ~ +50°C (-4 to 122°F)
Operating Humidity	20 to 80%
Power Supply	AC 100-240V ~ 50-60 Hz 50W Max
Dimensions	HxWxL: 5.2 x 19 x 14.5 inches (13.2 x 48.3 x 36.8 cm)
Weight	10.7 lbs. (4.85 kg)
Conformities	FCC, RoHS, CE Mark

Ordering Info

TAV900A/DVB-T
TAV900A/DVB-T2
TAV900A/ATSC
TAV900A/DVB-S

© 2012 Computer Modules, Inc. DVEO is a trademark of Computer Modules, Inc.
All other trademarks and registered trademarks are the properties of their respective
owners. All rights reserved. Specifications are subject to change without notice.


Broadcast Division
Computer Modules, Inc.
11409 West Bernardo Court
San Diego, CA 92127
Tel: (858) 613-1818 Fax: (858) 613-1815
www.dveo.com