

# T-STREAMER™ /DVB-T+H

Frequency Agile DVB-T and H Playout Server with L-Band RF Output Upconverter, for Scheduled Playback of Encoded Video Clips From On Board Hard Drive or External Device Via BNC Connector. Perfect For Driving HD Video Content to Plasma Monitors in Retail Stores or Onto Any Private Cable Feed in Public Venues. Typical Connection is Regular Coax Cable.



Available in any one of the units shown above



## Features

- Input: DVB ASI (Single or Multi Program Transport Streams)
- Output: DVB-T and DVB-H
- Transport stream capture via 100 BT or CD
- One RF channel can have up to one HD and one SD stream, or three SD streams
- On board transport stream files
- Additional MPTS streams can be created for you and included on hard drive
- Playout Scheduler – schedule tasks (five maximum) to run daily, weekly or monthly at a certain time
- Includes transport stream analyzer
- On board VHF/UHF/L-Band RF output up-converter
- 500 Gigabyte hard drive standard; Larger hard drive optional
- Playing time can be 3-5 hours and larger hard drive can be accommodated
- Continuous playback
- Complete channel range available from 2-69
- Optional hot swappable hard drive
- Available in three forms:
  - 4 RU Rackmount
  - 1 RU Rackmount
  - Rugged portable “Lunch box”
- Runs on Windows® XP or Windows® Vista

## Applications

- Engineering labs
- HD monitor testing
- Private "In House" TV operations
- Retail stores, restaurants, trade shows

## Overview

RF modulators convert digital video signals to RF (radio frequency) so the video can be transmitted to a television via its RF input. DVB-T (Digital Video Broadcasting – Terrestrial) is the European standard for broadcasting digital TV “over the air”. DVB-H is the standard for mobile TV in Europe and many other parts of the world. L-Band is the area of the RF spectrum between 950 MHz and 2100 MHz, which is reserved for mobile communications. The RF output of T-Streamer may be either an antenna or RF coax cable.

The **T-Streamer™/DVB-T+H** is a video server with an integrated DVB-T+H modulator and an L-Band RF output up-converter. It is designed to play multiple or single program transport streams for continuous “looped” playback on TV monitors. You can **simultaneously play back multiple virtual channels to many TV monitors** – making the T-Streamer/DVB-T+H ideal for restaurants, bars, stores, and other public spaces wishing to feed many digital TV channels to multiple high definition televisions. It is also extremely useful for HD monitor testing.

The T-Streamer/DVB-T+H is designed for 24/7 operation, and has been shown to be extremely reliable. Several features of the T-Streamer/DVB-T+H make it useful in both lab and broadcast environments, such as the ability to play a playlist in sequence. It can also pull in MPEG streams from an external device or server. This can be useful in the broadcast industry. Six transport streams are included with the T-Streamer/ DVB-T+H. Additional transport streams can be requested at time of purchase.

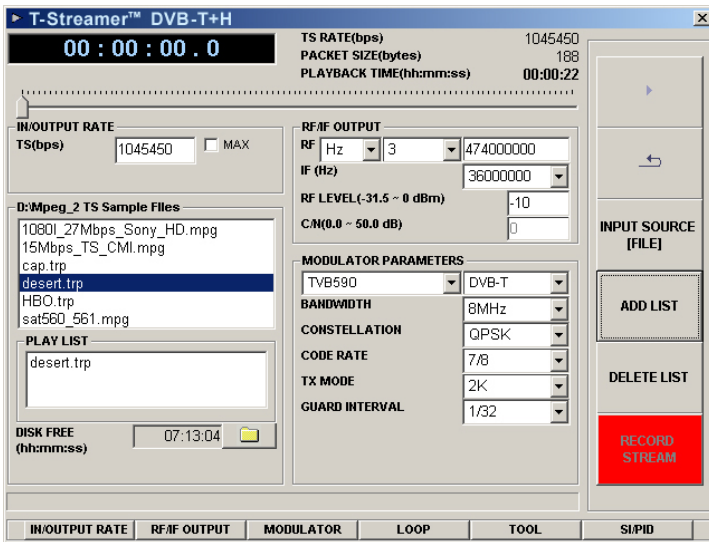


Computer Modules, Inc.

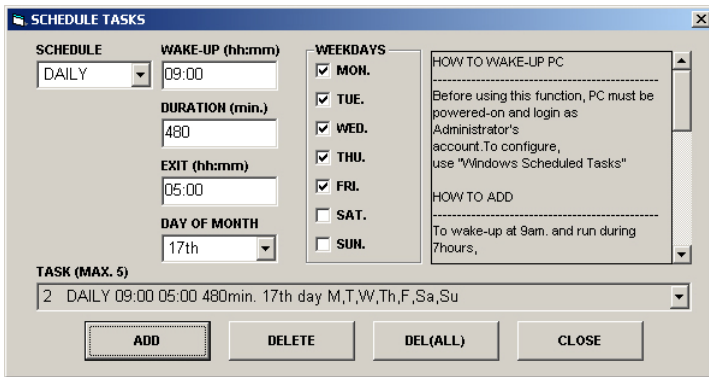
11409 West Bernardo Court  
San Diego, CA 92127

Tel: (858) 613-1818 Fax: (858) 613-1815

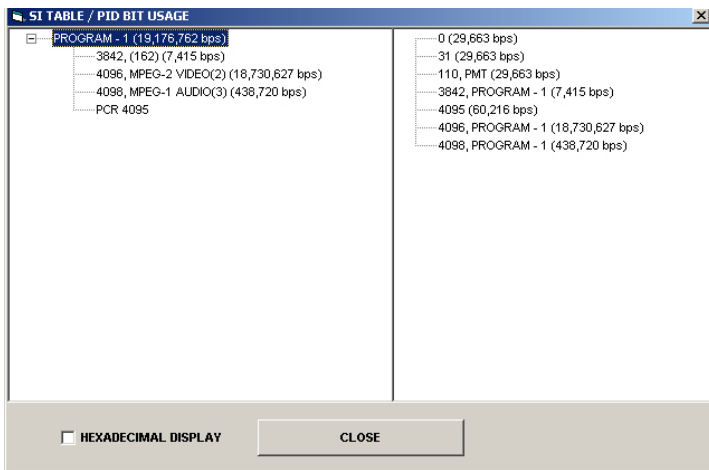
[www.dveo.com](http://www.dveo.com)



**Main GUI**



**Playout Scheduler**



**SI Table**

## Standard System

- 4 RU 19" Industrial Computer (Black) with rails
- P4 Motherboard with 100/1000 BT
- 1024 MB Ram 16MB Video 48x CD/DVB
- 500 GB - SATA HD
- Windows® XP or Windows® Vista
- LCD front panel touch screen
- Dimensions: 16.5" (W) x 17.625" (D) x 6.5" (H)  
(419 mm x 448 mm x 165 mm)

## High Availability System

- 1 RU 19 inch in Supermicro, 100/1000 Gig E, 1 GB RAM
- 32 MB video
- 48x CD/DVB ROM
- 500 GB - SATA Hard Drive or RAID "0" of multiple drives
- Windows® XP
- Hot Swap Hard Drive
- Hot Swap power supply

## Ordering Information

- T-Streamer/DVB-T+H
  - Standard T-Server/IP in 4 RU 19" rack with 500 GB HD and LCD front panel
- Extended T-Streamer/DVB-T+H/EXT W
  - Extended warranty for two years with Express Drive Exchange
- T-Streamer/DVB-T+H/HA/XX
  - High Availability T-Server/IP with 500 GB HD in 19" 1 RU Supermicro computer
- T-Streamer/DVB-T+H/LB
  - T-Streamer/DVB-T+H in a ruggedized, luggable "Lunchbox" instrument case

**NOTE:** No keyboard, mouse, or monitors are shipped with any T-Streamer/DVB-T+H.