

# T Capture DVB-T-T2™

**Real Time, 1 RU, Embedded Linux® Based, Frequency Agile, DVB-T/T2 (6, 7, 8 MHz) Transport Stream Recorder Player with Support for DVB-T and DVB-T2 Protocols and the Ability to Record 100 Hours of H.264 SD or HD Scheduled Content. Will Also Allow Playback of Recorded Programs with Time Management via Remote Management. Includes Full Satellite and Transponder Auto Scan. Supports MPEG-1 Layer II Audio. Supports Multi Language Operator Command Display and Also Full Subtitle Display. Available with Various International Power Cords.**



## Features

- Input: DVB-T, DVB-T2
- Output: DVB-T, DVB-T2
- Real time and scheduled recording of HD streams
- Receiving channel: VHF band and UHF band
- Channel bandwidth: 6, 7, 8 MHz
- DVB-T/DVB-T2 modulation type: QPSK, 16QAM, 64QAM, 256QAM
- FFT mode: 1K, 2K, 4K, 8K, 16K, 32K
- Code rate: 1/2, 3/5, 2/3, 3/4, 4/5, 5/6, 7/8
- Guard Interval: 1/4, 1/8, 1/16, 1/32, 1/64, 1/128, 19/128, 19/256
- Intermediate frequency
  - IF mode: Low IF
  - Center IF Frequency: 3 ~ 5 MHz
  - Note: Default is 4 MHz
- Supports digital Freeview TV and FM Radio with DVB-T/ DVB-T2 signal
- Optional version can simultaneously record two different channels from two different frequencies
- DVB-S+S2 version available

## Applications

- Retail stores, restaurants, trade shows – Play programs on schedule
- Record and store programs for archiving
- Engineering labs

## Overview

DVB-T (Digital Video Broadcasting – Terrestrial) is the standard used for terrestrial (over the air) broadcasting in Europe and many other areas of the world. DVB-T2 is the second generation version of DVB-T. DVB-T2 offers 30 to 50 percent higher transmission capacity than DVB-T, plus improved forward error correction.

The T Capture DVB-T-T2™ is a DVB-T and DVB-T2 (6, 7, 8 MHz) transport stream recorder player with a frequency agile demodulator. It records up to 100 hours of H.264 SD or HD content, on schedule. Recorded programs can be played back with time management via remote management.



**Computer Modules, Inc.**

11409 West Bernardo Court

San Diego, CA 92127

Tel: 858-613-1818 Fax: 858-613-1815

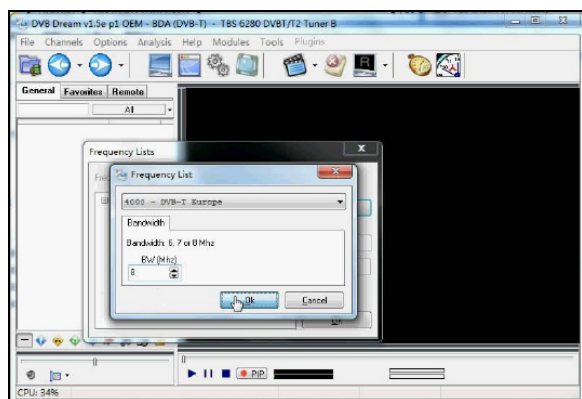
[www.dveo.com](http://www.dveo.com)

## Inputs/Outputs

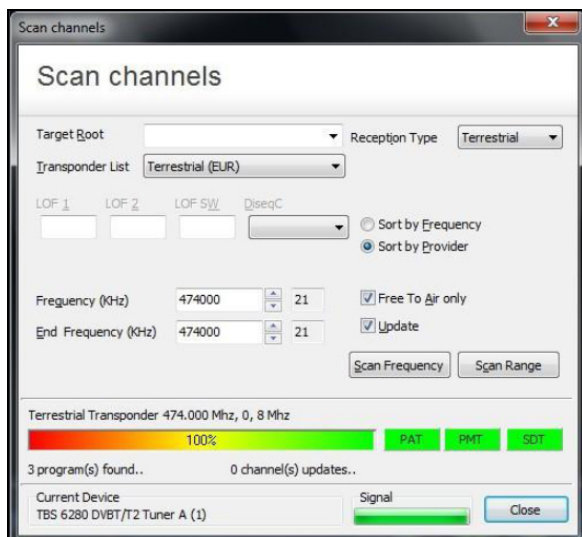


**DVB-T/T2 Input**      **DVB-T/T2 Output**

## Sample of GUIs



**Frequency Selection GUI**



**Scan Channels GUI**

## Specifications

### DVB-T or DVB-T2 Input and Output

Receiving Channel	VHF Band and UHF Band
Channel Bandwidth	6/7/8 MHz
Modulation Type	QPSK, 16QAM, 64QAM, 256QAM
FFT Mode	1K, 2K, 4K, 8K, 16K, 32K
Code Rate	1/2, 3/5, 2/3, 3/4, 4/5, 5/6, 7/8
Guard Interval	1/4, 1/8, 1/16, 1/32, 1/64, 1/128, 19/128, 19/256
Intermediate Frequency	IF mode: Low IF Center IF Frequency: 3 ~ 5 MHz Note: Default is 4MHz
Input Connector	75Ω (IEC-DIN female)
Output Connector	75Ω (IEC-DIN male)

### Administration

Access:	Web interface, ssh interface
SNMP:	Monitoring and alerts

### Physical & Power

Size:	19" rack mounted, 1 RU high
Voltage:	85-265 VAC/50-60 Hz, 50 watts
Temperature:	0°C to 50°C
Humidity:	5% to 95% non-condensing
Conformities:	UL, BSMI, CSA, FCC, CE, RoHs
Weight:	15 lbs.

## Ordering Information

- T Capture DVB-T-T2
- T Capture DVB-T-T2/2Ch – Optional two channel version
- T Capture DVB-S-S2 – DVB-S/DVB-S2 version



**Computer Modules, Inc.**

11409 West Bernardo Court

San Diego, CA 92127

Tel: 858-613-1818 Fax: 858-613-1815

[www.dveo.com](http://www.dveo.com)