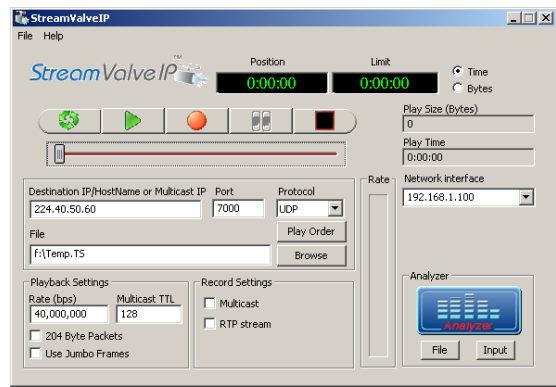


# StreamValve IP™

**MPEG-2 or H.264 Transport Stream Recorder/ Player Application with IP Input and Output for Continuous Playback and/or Capture of Transport Streams from a "Bouquet" by Time or by Size (Bytes). Provisioned for Transport Streams to be Sent to Single or Multiple UDP/IP or TCP/IP and RTP/IP (record only) Addresses. Includes a Built-in Transport Stream Analyzer. This is a Stand Alone Application that Works with Most Ethernet Ports and Requires No DVEO Hardware.**



**Main GUI**

## Features

- MPEG-2 or H.264 transport stream input and output over IP (UDP/TCP/RTP)
- Features rich easy-to-use GUI
- Rate Control for IP transmission provided by proprietary technique
- Plays and captures TS over IP from all well known video encoders, decoders, and servers including Harmonic, Tandberg, Omneon, Tektronix, Radyne, Big Band, SeaChange, Scopus, TUT Systems, and many others
- Compatible with HD, H.264, or SD streams
- Supports unicast, multicast, and broadcast
- Bit rate to 200 Mbps
- Supports both SPTS and MPTS
- IP in and out over 10BT, 100BT, Gig/E
- Option to select network interface cards (NIC) if more than one is available on the system
- Includes automatic transport stream Analysis Utility with PID and PCR clock info
- Automatically uses the TS PCR info to calculate proper transport stream rate
- Selectable 188/204 packet size
- Continuous play or single play modes
- Limit capture or playback by time or by size
- Buffer overrun or underrun warnings
- MPEG-2 TS software viewer monitors output
- Includes transport streams for test purposes

## Applications

- Ideal for generating test streams for testing Fiber Optic and other High Speed IP links
- Backup source for TS over IP
- Snooping or capturing TS over Gig/E IP traffic
- Monitoring or viewing a TS over Gig/E IP streams
- Video over IP server for VOD testing

## Overview

**StreamValve IP™** is a transport stream recorder player software application with an integrated transport stream analyzer. It is ideal for testing high speed fiber optic links and copper-based IPTV links. We envision this product to be useful in product testing and development, and also in real world broadcast applications.

Several features of the StreamValve IP make it useful in both lab and broadcast environments. It allows you to play a playlist in sequence. This can be useful in the broadcast industry. A new feature is the ability to select the NIC. The NICs can be connected to different networks. You can capture a stream from one network and play back files to a different network. The onboard transport stream analyzer is useful to enable you to visualize the services within the incoming stream. The built-in analyzer displays the tables that are present in a multiprogram stream and helps you decide whether the particular stream you wish to capture has the correct table structure.

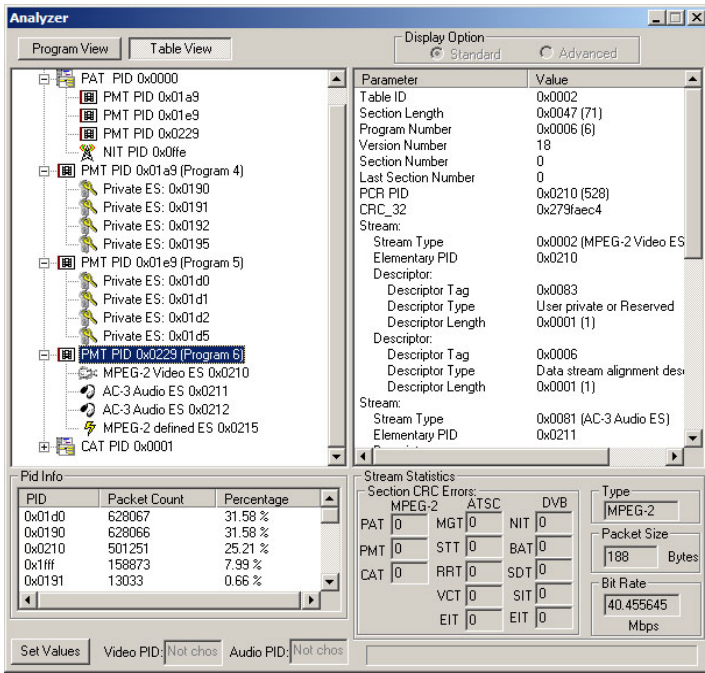
Six transport streams are included. Additional transport streams can be requested at time of purchase.



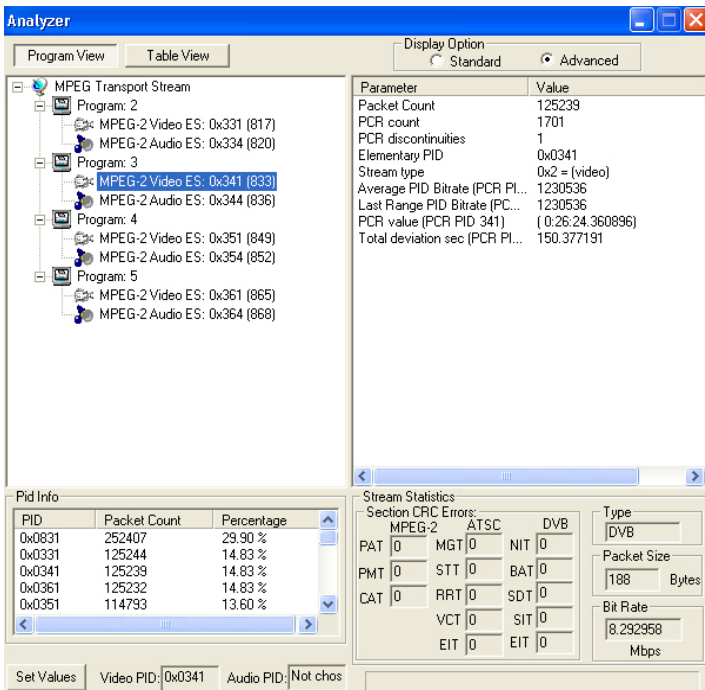
**Computer Modules, Inc.**  
11409 West Bernardo Court  
San Diego, CA 92127

Tel: (858) 613-1818 Fax: (858) 613-1815

[www.dveo.com](http://www.dveo.com)



**View of All Tables  
(Displays the tables  
stored in the Transport Stream)**



**View of Program Structure  
(Displays programs and their corresponding  
elementary streams in the Transport Stream,  
plus Bitrate, PIDs, and PCR information)**

# System Requirements

- Intel or AMD dual-core CPU
- 1 GB RAM
- One additional high-speed enterprise high-speed hard drives for capturing and playing back files
- For high bit rate stream, use multiple hard drives in striped RAID array
- At least single GigE NIC
- Windows® XP 32-bit, Windows 2003 Server 32-bit, or Windows 2008 Server 32-bit with all available updates done

**Note:** For optimum performance, use enterprise level SATA or SAS hard drives.

# Ordering Information

StreamValve IP

© 2011 Computer Modules, Inc. DVEO and StreamValve IP are trademarks of Computer Modules, Inc. All other trademarks and registered trademarks are the properties of their respective owners. All rights reserved. Specifications are subject to change without notice.



**Computer Modules, Inc.**  
11409 West Bernardo Court  
San Diego, CA 92127

Tel: (858) 613-1818 Fax: (858) 613-1815

[www.dveo.com](http://www.dveo.com)