

MPEG GEARBOX™ QAM/IP

Broadcast Quality, Multichannel, Real Time, Standard or High Definition (up to 1080p), Integrated RF Receiver, and MPEG-2 to H.264 or H.264 to MPEG-2 Transcoder, Scaler, and Streamer. Based on Embedded Linux®, it Boots Quickly from Flash Drive and Remembers all Settings. Easy to Use GUI Allows Full Config of Each Stream and via SNMP can Report its Status to Remote Network Operations. Will Transcode and Process Multiple Streams up to CPU Limitations. Typical Dedicated Transcodes are up to 15 SD Streams, 3 1080i/p Streams, and 4 to 6 720p Streams. Supports RTMP, HTTP, Smooth, Live, and Dynamic Streaming and Works with Wowza®, Adobe® Flash® and RealNetworks® Servers.



Features

- Input or output format can be MPEG-2 or H.264
- Supports HTTP adaptive Smooth, Live, and Dynamic Flash streaming protocol for output to mobile devices
- Capable of near real time FTP output of segmented TS streams with I-Frame boundaries
- Input: Simultaneously receives one to eight QAM inputs – analog or digital clear QAM
- Output: IP – UDP, RTP, RTSP, HTTP, HTTP Live, HTTP Smooth, HTTP Dynamic, FTP, RTMP (Open Flash), WMV9 with HTTP/ASF
- Supports M3u8 playlist files (standalone and through HTTP live)
- Transcoding bit rates: .1 Kbps to 15 Mbps
- Resolutions: qHD, H.264up, SQVGA, QCIF, QVGA, SIF, VGA, or any custom size up to 1080i/p
- Simultaneous demodulation, transcoding, encapsulation, and optional time delay
- Transcodes 4 to 6 720p HD streams, up to 3 1080i or 1080p HD streams, or 15 SD streams from MPEG-2 to H.264 (CPU dependent) or vice-versa
- SNMP support
- Tested to work with Wowza®, Adobe® Flash®, and RealNetworks® Helix® servers
- Tested compatible with major brands of IP devices including Amino™, Roku®, Atlanta DTH, and Apple iPad® and iPhone®
- Tested compatible with major brands of H.264 decoders
- Audio support: AAC, Embedded pass-through, Ogg Vorbis, or MP3 (license required)
- Settings are remembered when power cycled
- Based on embedded Linux® (via flashdisk)

Note: This system is typically deployed in "closed" systems where bandwidth is dedicated and is used for this purpose only. It is not guaranteed to work over the public internet. Performance depends on available bandwidth.

Applications

- IPTV Unicasting, Multicasting, Streaming
- Telco TV
- Hotels, Cruise Lines, Universities, Resorts
- Streaming to designated VideoLAN VLC, Mplayer, or Windows Media Player clients, or to Amino™ or other set-top boxes

Overview

MPEG Gearbox™ QAM/IP is a real time multichannel streamer, integrated RF receiver, and transcoder designed to receive QAM signals and transform them into streams that are best suited for customers. It is designed to be scalable, easily adaptable, customizable, and field upgradeable to meet the needs of broadband network operators who are now more than comfortable with embedded Linux® based appliances. It relies on an Intel 6 Core CPU as an accelerator. We have also optimized the transcode engine to get reliable operation.

The MPEG Gearbox QAM/IP is an MPEG-2 to H.264, or H.264 to MPEG-2 transcoder or scaler. It receives from one to eight digital or analog clear QAM transport streams and transcodes them to MPEG-2 or H.264, and outputs them to an IP network. Resulting streams can be viewed with standard IP capable set-top boxes, streaming video, smart phones, or software clients such as VLC or MPlayer. The MPEG Gearbox QAM/IP receives transport streams, demultiplexes the requested channels and streams these channels using UDP, RTP, RTSP, RTMP, Adaptive, or HTTP via IP networks as either IP multicast or IP unicast streams. The system transcodes individual streams into H.264 format up to a maximum individual bitrate of 15 Mbps, and MPEG-2 streams up to a maximum of 15 Mbps.

A new variant supports optional time delay for up to 40+ streams. Each stream can be received, transcoded, time delayed, and forwarded at the requested time.

Depending on the configuration, it forwards selected programs via IP datacasting; PAT, PMT, video PID, audio PID(s) and PCR information are transmitted. MPEG Gearbox QAM/IP selects all required PIDs and multiplexes the demultiplexed transport stream packets into IP packets.

The unit provides PID filtering of all unwanted traffic, increasing system performance and the number of channels which can be transmitted per unit.

Programs typically are forwarded (pushed) as transport stream packets via UDP or as RTP (real time protocol) payload (RFC 2250). Pushing can be either unicast or multicast. In addition to push, programs can be forwarded on request (pulled) using RTSP, HTTP, HTTP Live, HTTP Smooth, RTMP, or HTTP Dynamic.



Computer Modules, Inc.

11409 West Bernardo Court

San Diego, CA 92127

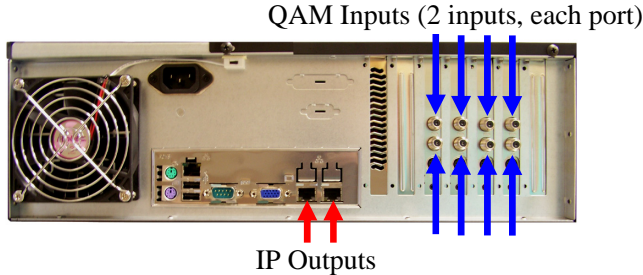
Tel: 858-613-1818 Fax: 858-613-1815

www.dveo.com

IP Output

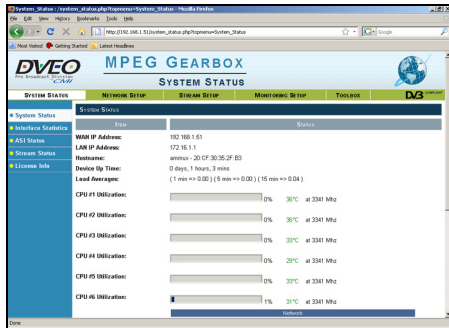
Ethernet: Up to 2 x 1 Gige
Protocols: UDP, RTP, RTSP, HTTP, HTTP Live, HTTP Smooth, HTTP Dynamic, FTP, RTMP (Open Flash), Windows® Media Video 9 with HTTP/ASF
Type: IP-multicast, IP-unicast, IGMP

Input/Outputs

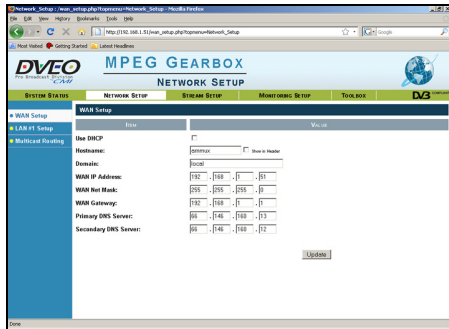


Transcodes up to 15 SD streams, four to six 720p streams, or three 1080i or 1080p HD streams from MPEG-2 to H.264 (CPU dependent) or vice-versa.

GUI's



Status Screen



Network Setup

Ordering Information

- MPEG Gearbox QAM/IP
- MPEG Gearbox QAM/IP – with real time store and forward (time delay) option
- MPEG Gearbox QAM/IP – with encrypted streams option

Other versions available: MF (Multifunction), ASI/IP, IP/ASI, IP/IP, ASI/ASI, SMPTE310M/IP, DVB-T/IP, DVB-S/S2/IP

© 2012 Computer Modules, Inc. DVEO and MPEG Gearbox are trademarks of Computer Modules, Inc. All other trademarks and registered trademarks are the properties of their respective owners. All rights reserved. Specifications are subject to change without notice.

Specifications

Supported Resolutions – Input and Output

1920 x 1080	720 x 480	480 x 480	qHD
1280 x 720	704 x 480	480 x 320	H.264up
720 x 576	640 x 480	320 x 240	

Also supports any custom resolution not listed here.
 Note: Lower resolution results in higher transcodes.
 Note: Supports closed captions.

QAM Input

Modulation:	Analog or Digital Clear QAM
Inputs:	RF from antenna
Frequency range:	55 to 867 MHz
Maximum raw throughput:	200 mbps

IP Output

Audio Output:	AAC, Embedded pass-through, Ogg Vorbis, or MP3 (license required)
Output “wrappers”:	UDP, RTP, RTSP, HTTP, HTTP Live (HLS), HTTP Smooth, HTTP Dynamic, FTP, RTMP (Open Flash), Windows® Media Video 9 with HTTP/ASF
Type:	IP-multicast, IP-unicast, IGMP
Bit Rates:	Multiple H.264 and/or MPEG-2 video streams at different bit rates (.1 to 15 mbps)

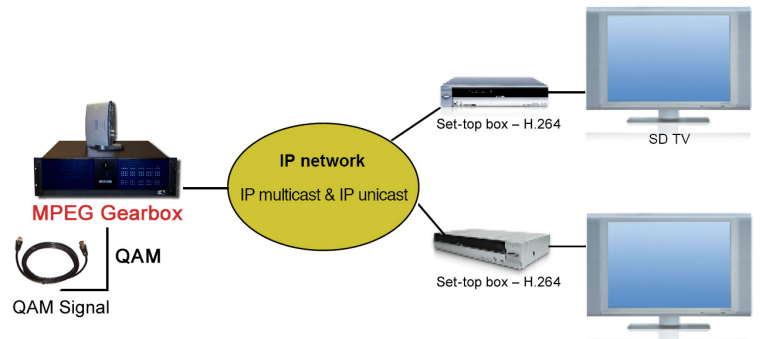
Administration

Access:	Web interface, ssh interface
SNMP:	Monitoring and alerts

Physical & Power

Size:	19” rack mounted, 3 RU high
Voltage:	85-265 VAC/50-60Hz, 50 watts
Temperature:	0°C to 50°C
Humidity:	5% to 95% non-condensing
Conformities:	UL, CSA, CE, RoHS
Weight:	30 lbs. (13.6 kg)

Block Diagram



DVEO
 Broadcast Division
 Computer Modules, Inc.
 11409 West Bernardo Court
 San Diego, CA 92127
 Tel: 858-613-1818 Fax: 858-613-1815
www.dveo.com