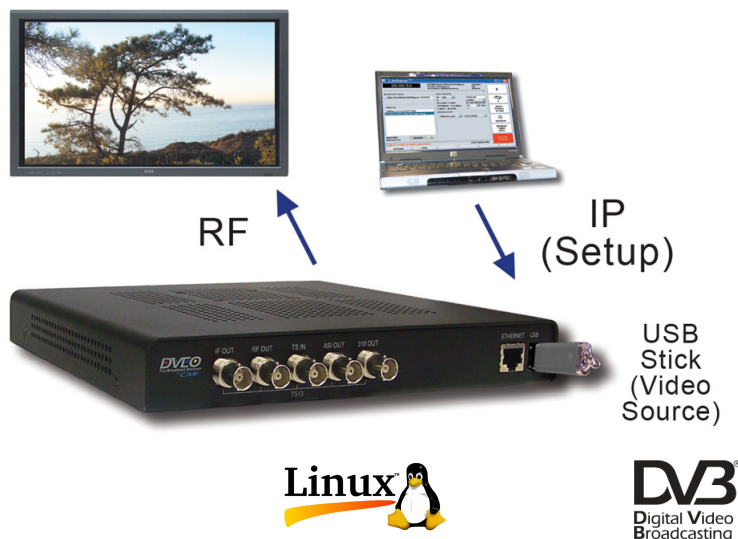


Lantana™ QAM

Small, Standalone, Multi-Function, Frequency Agile, QAM (A, B, or C) Modulator with Web-based Management. Accepts MPEG-2 or H.264 Streams (SPTS or MPTS) from ASI, or Local USB “Stick”. Perfect Remotely Manageable RF Modulator with Local Storage, for Digital Signage, Trade Shows, Testing, and more. Modify Setup via Any Internet Connection – No Computer Required to Operate. Set Up Remotely and Forget.



Features

- Input: DVB-ASI, USB, or SMPTE 310M – plays transport streams from USB stick or ASI source
- Accepts MPEG-2 or H.264 Streams (SPTS or MPTS)
- Output: QAM (Annex A, B, or C)
- RF Output Frequency: 55-860 MHz, 956-1750 MHz
- IF Output Frequency: 36 MHz/44 MHz selectable
- Payload = Up to 38 Mbps
- ITU-T J.83 Annex A/C and B compatible
- Field upgradeable – can be reprogrammed to add additional profiles
- Playback Scheduler for Day, Week, or Month
- Ships with Java®-based GUI
- On board Channel 1-135 selectable RF output up-converter
- Programmable RF output level (0.1 dB step)
- Sample transport streams available
- SNMP (10/100 Ethernet) remote web-based LAN management
- Special Bundle Prices for multiple modulations
- Works standalone and will reboot to configured state

Applications

- Digital signage
- In Store Demo of plasma televisions
- Sending HD video to multiple monitors in sports arenas and stadiums
- Set-top box testing
- Laboratory applications

Overview

RF modulators convert video to RF (radio frequency) so the video can be transmitted to a television via its RF input. QAM is the RF modulation format used for cable. This modulation format is designated by the ITU organization.

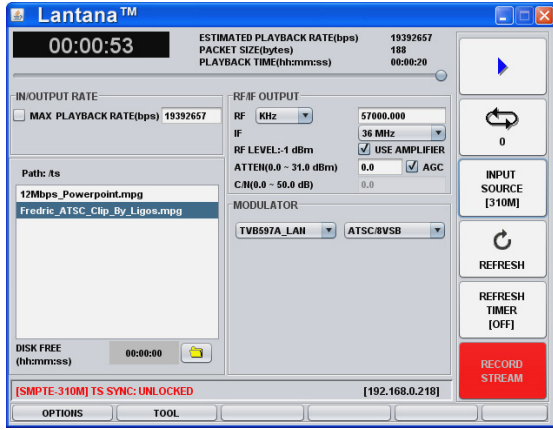
Lantana QAM is a remotely operated, software definable, frequency agile modulator that sends live or recorded video streams to multiple HD monitors via inexpensive RF over coaxial cable. With its included software, one can create a powerful remote signage server. It does not need a computer to feed content to it.

For example, retailers can install one unit at each store, along with a USB thumb drive loaded with numerous videos. Using web-based management, an operator in the home office can program which video will play out on multiple HD monitors at each location. Lantana QAM is also suitable for set-top box testing and laboratory applications.

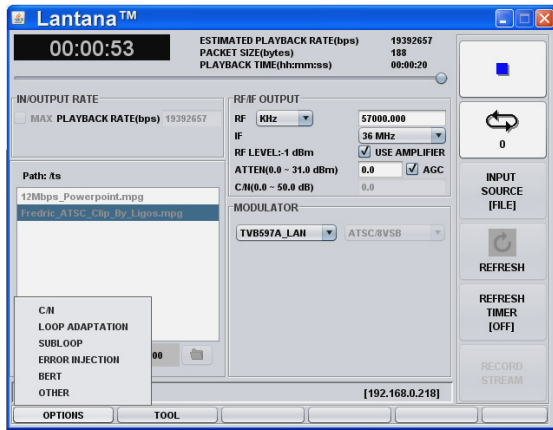
The input can be USB, DVB-ASI, or SMPTE 310M, single or multi program transport streams. One QAM channel can have two HD streams.

Customers can purchase licenses for additional profiles and upgrade the unit immediately. Lantana QAM accepts and plays out MPEG-2 or H.264 streams (SPTS or MPTS) from ASI, or plays transport streams from a local flash-based USB “stick”.

DVEO
Broadcast Division
Computer Modules, Inc.
11409 West Bernardo Court
San Diego, CA 92127
Tel: 858-613-1818 Fax: 858-613-1815
www.dveo.com



Main GUI



Options

Product Views



Front

USB Port



Back

Power

On/Off Switch

Ordering Information

Lantana QAM

Note: Software ships with Lantana QAM at no cost.

Note: This unit is upgradeable with all other modulations, like 8VSB, ATSC M/H, DVB-C, DVB-H, DVB-S/S2, DVB-T, DVB-T2, CMMB, ISDB-T, etc.

© 2011 Computer Modules, Inc. DVEO and Lantana are trademarks of Computer Modules, Inc. All other trademarks and registered trademarks are the properties of their respective owners. All rights reserved. Specifications are subject to change without notice.

Inputs/Outputs

Input	USB, DVB-ASI, or SMPTE 310M
Output	QAM or DVB-C
IF output	Freq: 36 MHz/44 MHz selectable Level: -15 dBm max (@ 36/44 MHz)
RF output	Freq: VHF/UHF 55~860 MHz Level: VHF/UHF -31.5 to 0 dBm Freq accuracy: +/-5 KHz max Attenuation step: 0.1 dB Phase noise <-90dBc/Hz @ 10 KHz RF step size: 100 KHz step
Connectors	75 Ohm BNC
Bitrate	Up to 38 Mbps
Ethernet	10/100 BT on RJ45
USB	USB 2.0

QAM Specifications

Standard	ITU-T J.83 Annex A/C and B compatible
Constellations	Annex A/C: 16-QAM, 32-QAM, 64-QAM, 128-QAM, and 256-QAM selectable Annex B: 64-QAM and 256-QAM

Maximum Information Bit Rates

Annex A	64-QAM: 38.440471 Mbps 256-QAM: 51.253961 Mbps
Annex B	64-QAM: 26.97035 Mbps 256-QAM: 38.81070 Mbps
Annex C	64-QAM: 26.97035 Mbps 256-QAM: 38.810701 Mbps

Physical & Power

Dimensions	Width: 9.2 inches (234 mm) Length: 9.3 inches (237 mm) Height: 1.25 inches (32 mm)
Weight	1 lb., 6 oz. (624 grams)
Power	External 19V DC power supply
Operating Temperature	32° to 113° F (0°C to 45°C)
Humidity	To 85% Non-condensing relative humidity
Conformities	FCC, RoHS, CE Mark



Computer Modules, Inc.
11409 West Bernardo Court
San Diego, CA 92127

Tel: (858) 613-1818 Fax: (858) 613-1815

www.dveo.com