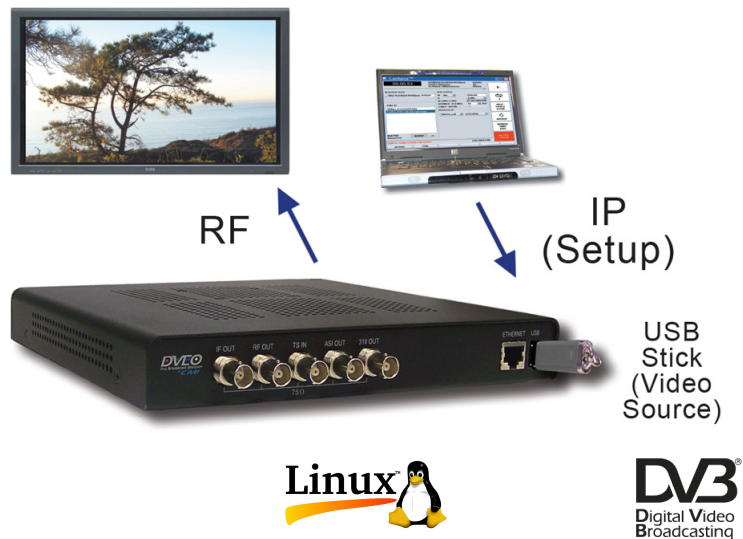


# Lantana™ ISDB-T

**Small, Standalone, Multi-Function, Frequency Agile, ARIB STD-B31 Compatible ISDB-T Modulator with Web-based Management. Accepts MPEG-2 or H.264 Streams (SPTS or MPTS) from ASI, or Local USB “Stick”. Perfect Remotely Manageable RF Modulator with Local Storage, for Digital Signage, Trade Shows, Testing, and More. Modify Setup via Any Internet Connection – No Computer Required to Operate. Set Up Remotely and Forget.**



## Features

- Input: DVB-ASI, USB, or SMPTE 310M – plays transport streams from USB stick or ASI source
- Accepts MPEG-2 or H.264 Streams (SPTS or MPTS)
- Output: Frequency Agile ISDB-T
- RF Output Frequency: 55-860 MHz, 956-1750 MHz
- IF Output Frequency: 36 MHz/44 MHz selectable
- ARIB STD-B31 v1.6 compliant
- Bitrate: up to 27 Mbps
- ITU-T J.83 Annex A/C and B compatible
- Field upgradeable – can be reprogrammed to add additional profiles
- Playback Scheduler for Day, Week, or Month
- Ships with Java®-based GUI
- On board Channel 1-135 selectable RF output up-converter
- Programmable RF output level (0.1 dB step)
- Sample transport streams available
- SNMP (10/100 Ethernet) remote web-based LAN management
- Special Bundle Prices for multiple modulations
- Works standalone and will reboot to configured state

## Applications

- Digital signage
- In Store Demos of ISDB-T receivers
- Sending HD video to multiple monitors in sports arenas and stadiums
- Set-top box testing
- Laboratory applications

## Overview

RF modulators convert a video signal to RF (radio frequency) so the video can be transmitted to a television via its RF input.

ISDB-T (Integrated Services Digital Broadcast – Terrestrial) is the digital broadcasting standard used in Japan and Brazil for mobile and regular terrestrial digital TV.

**Lantana ISDB-T** is a remotely operated, software definable, frequency agile modulator that sends live or recorded video streams to multiple HD monitors via inexpensive RF over coaxial cable. With its included software, one can create a powerful remote signage server. It does not need a computer to feed content to it.

For example, retailers can install one unit at each store, along with a USB thumb drive loaded with numerous videos. Using web-based management, an operator in the home office can program which video will play out on multiple HD monitors at each location. Lantana ISDB-T is also suitable for set-top box testing and laboratory applications.

The input can be USB, DVB-ASI, or SMPTE 310M, single or multi program transport streams. One ISDB-T channel can have two HD streams.

Customers can purchase licenses for additional profiles and upgrade the unit immediately. Lantana ISDB-T accepts and plays out MPEG-2 or H.264 streams (SPTS or MPTS) from ASI, or plays transport streams from a local flash-based USB “stick”.

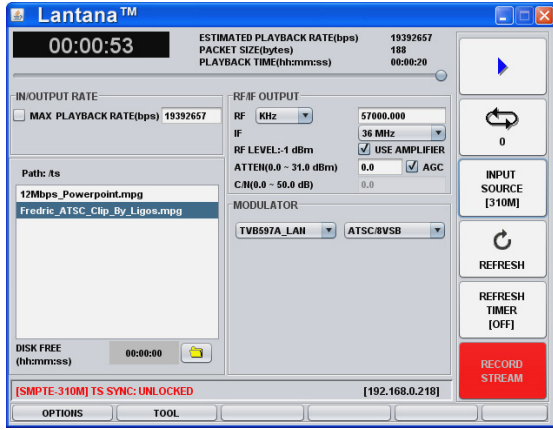


**Computer Modules, Inc.**

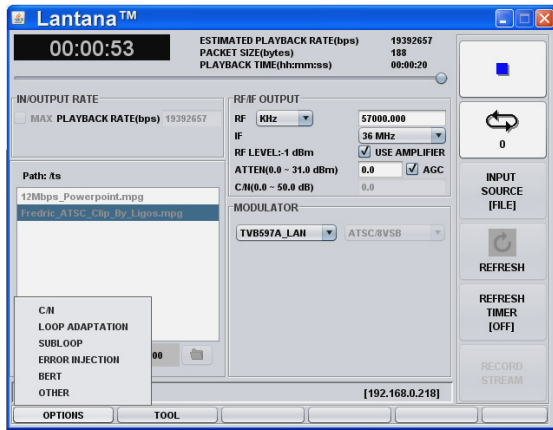
11409 West Bernardo Court  
San Diego, CA 92127

Tel: 858-613-1818 Fax: 858-613-1815

[www.dveo.com](http://www.dveo.com)



Main GUI



Options

Product Views



Front

USB Port



Back

Power

On/Off Switch

Ordering Information

Lantana ISDB-T

Note: Software ships with Lantana ISDB-T at no cost.  
 Note: This unit is upgradeable with all other modulations, like QAM, 8VSB, ATSC M/H, DVB-C, DVB-H, DVB-S/S2, DVB-T, DVB-T2, CMMB, etc.

Inputs/Outputs

Input	USB, DVB-ASI, or SMPTE 310M
Output	ISDB-T or DVB-C
IF output	Freq: 36 MHz/44 MHz selectable Level: -15 dBm max (@ 36/44 MHz)
RF output	Freq: VHF/UHF 55~860 MHz Level: VHF/UHF -31.5 to 0 dBm Freq accuracy: +/-5 KHz max Attenuation step: 0.1 dB Phase noise <-90dBc/Hz @ 10 KHz RF step size: 100 KHz step
Connectors	75 Ohm BNC
Bitrate	Up to 27 Mbits/s
Ethernet	10/100 BT on RJ45
USB	USB 2.0

ISDB-T Specifications

Standard	ARIB STD-B31 v1.6 compliant
Mode	Mode I, Mode II, Mode III
Code Rates	1/2, 2/3, 3/4, 5/6, 7/8 selectable
Mapping	DQPSK, QPSK, 16-QAM, 64-QAM
Guard Interval	1/4, 1/8, 1/16, 1/32
Timing	Mode I - 0, 4, 8, 16
Interleaving	Mode II - 0, 2, 4, 8
Length	Mode III - 0, 1, 2, 4
Number of Segments	1 / 13 Segment
Support TMCC Info & Generation (ISDB-T info & IIP)	*ISDB-T modulation from DVB-ASI input is not supported

Physical & Power

Dimensions	Width: 9.2 inches (234 mm) Length: 9.3 inches (237 mm) Height: 1.25 inches (32 mm)
Weight	1 lb., 6 oz. (624 grams)
Power	External 19V DC power supply
Operating Temperature	32° to 113° F (0°C to 45°C)
Humidity	To 85% Non-condensing relative humidity
Conformities	FCC, RoHS, CE Mark



Computer Modules, Inc.  
 11409 West Bernardo Court  
 San Diego, CA 92127

Tel: (858) 613-1818 Fax: (858) 613-1815

[www.dveo.com](http://www.dveo.com)