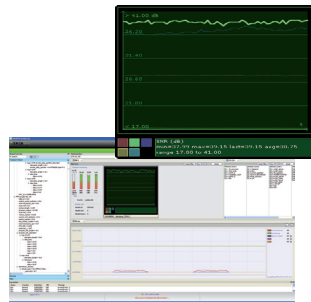


DiviCatch™ RF-T

DVB-T Live RF Analyzer



Create your own world finest Analyzer

The DiviCatch RF-T is a Pocket Analyzer cumulating DVB-T live reception with MPEG2 TS real-time analysis and recording.

The product combines 3 levels of real-time analysis:

RF measurements: Key RF parameters (MER, SNR, etc.) are shown in real-time.

MPEG2-TS monitoring: The 3 priority levels of ETR290 are implemented, bitrate can be monitored globally and for each service, and customizable alarms are available.

In addition, DiviCatch RF-T features live stream capture capabilities. The application also integrates a video decoder enabling real-time decoding of all unencrypted services.

Eventually, the GPS option turns the DiviCatch RF-T into the must-have companion for coverage and drive tests.

Enensys has implemented a new and very intuitive GUI. Divicatch monitoring screens can be totally customized and loaded. User can also save file analysis (offline analysis available)

As DTTV deployments keep multiplying worldwide, DiviCatch RF-T, a 2-in-1 product featuring both RF and DVB-ASI inputs, offers a cost-effective test solution for field, lab or head-end applications.



- To stimulate part of a broadcast chain
- To test applications
- To validate both RF & Baseband
- To achieve cost-efficiency on broadcast network

Applications

- Broadcast Test & Measurement
- RF Reception Quality Measurement
- DVB-T Broadcast Troubleshoot
- Installation & Maintenance
- Head-End Monitoring
- Coverage & Drive Tests

Benefits

- 2-in-1 product: RF + Baseband
- One application for all DiviSeries products
- Compact and USB-self-powered device
- Receive live DVB-T signals
- Validate the quality of reception & transmission
- Add table and specifications Analysis (PSI/SI,PSIP,..)
- Write and Save your own scripts
- Evaluate the Quality of Restitution (MFER & FER ratios)
- Output coverage maps with GPS capability (opt.)

Characteristics

- 1 RF input for DVB-T
- 1 ASI input
- RF key measurements
- TR 101 290 validation (aka ETR290)
- PIDs, PSI/SI parsing
- Advanced MPEG2-TS recording
- MPEG2-TS over IP forward
- IP source analysis
- IP Output (Ethernet interfaces selection)

Options

- GPS receiver for synchronizing RF measurements with geographical coordinates

DiviCatch™ RF-T

DVB-T Live RF Analyzer

Input Interfaces

RF input	
Standards	DVB-T
Connector	1x F-type (female) - 75 Ω
Frequency range	UHF and VHF (45 - 864 MHz)
Sensitivity	-80 to -8 dBm
Channel bandwidth	5, 6, 7 & 8 MHz
FFT Mode	2k, 4k, 8k
Modulation	QPSK, 16QAM, 64QAM + hierarchical
RF loopthrough	
Connector	1x F-type (female) - 75 Ω
DVB-ASI	
Connector	1x BNC (female) - 75 Ω

RF Measurements

All measurements are made in real-time

Constellation	Diagram display
Signal level	56 to 100, expressed in dBμV
SNR	0 to 24, expressed in dB
Bit Error Rate	Pre-Viterbi, Post-Viterbi, Post-RS
Modulation Error Rate	0 to 38, Typical 34, expressed in dB
Error Vector Magnitude	Expressed in %

Baseband Transport Monitoring

MPEG2-TS features monitored in real-time from either source:

- ASI or RF through USB from the DiviCatch
- IP stream through Ethernet from the PC

TR 101 290
Priorities 1, 2 and 3 implemented
MIP Validation

Service information
PSI/SI table display for DVB & DTMB services
PSIP table display for ATSC services
PID Summary

Bitrate monitoring
Overall, by program or PID by PID

PCR Jitter
PCR Jitter Accuracy graphs (real-time, history and density)

Services Processing

MPEG2/MPEG4 services decoding (unencrypted programs)
Recording of the entire multiplex to a TS file
Real-time forward of the entire multiplex to an IP address

GPS feature (optional)

External GPS receiver (USB self-powered)
Export of log files and coordinates to CSV format
Customizable logging information

Environment

Operating temperature	0 to 55°C / 0 to 122 °F
Storage temperature	-20°C to 70°C / -4°F to 158°F
Humidity	0 to 95%, non condensing

Physical and Power

Length	134.7 mm / 5.3 in.
Height	61.45 mm / 2.42 in.
Width	27 mm / 1.06 in.
Weight	156g
Power supply	USB2.0 self-powered

Ordering codes

DVB-T Analyzer	DiviCatch RF-T
Shipped with software (Windows 2000/XP)	
GPS feature	NN6-GPS



ENENSYS Technologies
Le Germanium
80 avenue des Buttes de Coesmes
35700 Rennes
FRANCE
Office (+33) 810 ENENSYS
(+33) 810 36 36 79
Fax (+33) 299 36 03 84
sales@enensys.com