

DigiDisk/SDI™

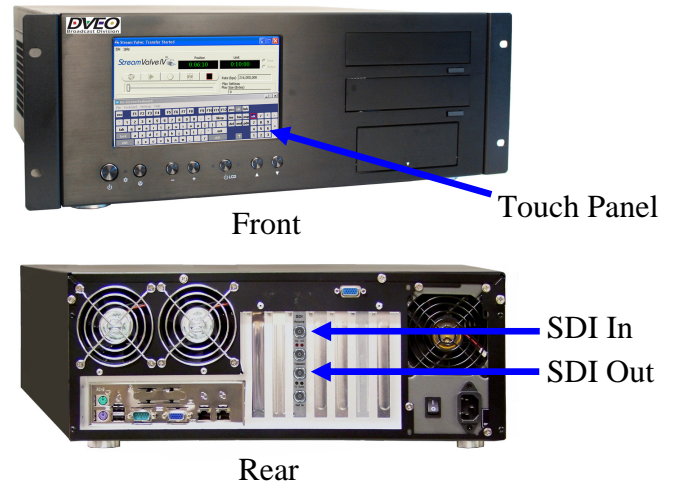
Inexpensive, Broadcast Grade, 8 or 10 Bit SDI (SMPTE 259M) Disk Server, Player, and Recorder, with 8 or 10 bit SDI Input and Output with VCR Like Controls for Broadcast Quality Recording and Playback of Uncompressed Digital Content to Local Hard Drive. Features Remote Management, Random Access via Slider, and Includes a Simple Playback Scheduler. Ideal Low Cost VTR Replacement with SDI SMPTE 259M Output at Digital Studios with SDI Switching/Infrastructure.

Features

- Captures and plays back SDI, with playback scheduler
- Digital Uncompressed Video Input: SDI SMPTE 259M (8 or 10 bit at 270 Mbps)
- Incorporates 1 TB HD sufficient for seven hours of uncompressed video at 8 bit
- Interfaces to all digital workflows
- Video Format: 720x486 (525) /59.94i (ITU)
- Advanced playback Scheduler for Day, Week, Month, or Year
- Clock Reference Input Connector (Black Burst)
- Features Rich easy-to-use GUI with slider for random access
- Supports IP input to the local hard drive – convenient for file transfers
- Continuous play or single play modes
- 500 GB Hard Drive or larger storage lets you build, maintain, and use a large local library of Video Clips. This can be expanded to 2 T bytes.
- Audio: assumed to be embedded in video
- Windows® 7 based
- Continuous play or single play modes
- Remote management via Web interface or command line for automation
- DVD or Blu-ray™ recorder for import or export of resources
- External RAID option with 12 TB
- Incorporates SMPTE time code or network time protocol for R.T.C. adjustments

Applications

- Ideal for General Broadcast applications as a VTR
- Generating SDI streams for testing purposes
- Post Production Integration
- Instant Uncompressed Playback
- Continuous High Quality Uncompressed trade show signal source
- Replacement for D1 Tape Decks



Overview

SDI (SMPTE 259M) stands for Serial Digital Interface and is the primary interface worldwide for standard definition digital video. The bit rate is 270 Mbps. SDI is compatible with both NTSC and PAL. Many television stations have adopted SDI as the format for all workflow.

The DigiDisk/SDI is a state of the art disk recorder featuring high performance disk based storage and provides many features of tape based video disk recorders. The GUI incorporates a simple scheduler. Unlike video editing systems we do not in any way alter the signal. We capture the signal exactly as you feed it to us. We assume that audio is embedded into the SDI signal.

Our unit features a simple, no nonsense, GUI that is easy to master. Once configured you will use a few controls: record, store, play, and schedule. We are also more than willing to customize the feature set for your particular needs whether for the event production, presentation, or the post production market. The DigiDisk/SDI incorporates one of our own SDI PCI interface cards and it acts as an ingest/output port.



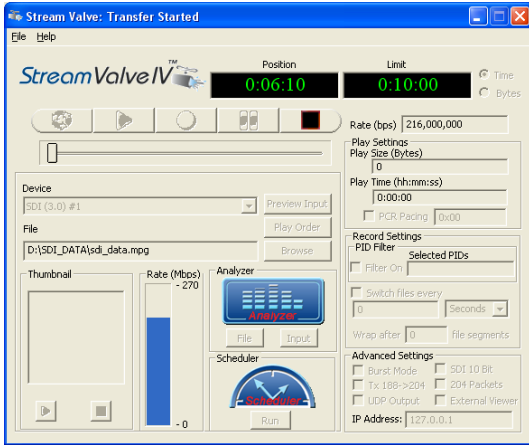
Computer Modules, Inc.

**11409 West Bernardo Court
San Diego, CA 92127**

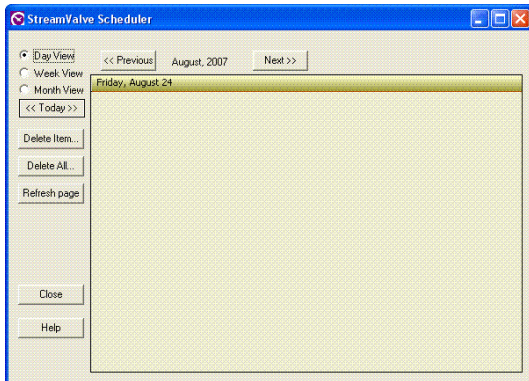
Tel: (858) 613-1818 Fax: (858) 613-1815

www.dveo.com

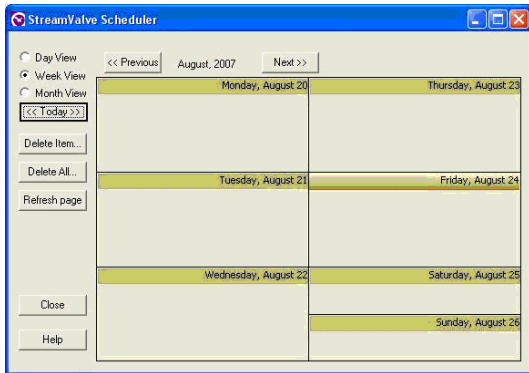
Screen Shots



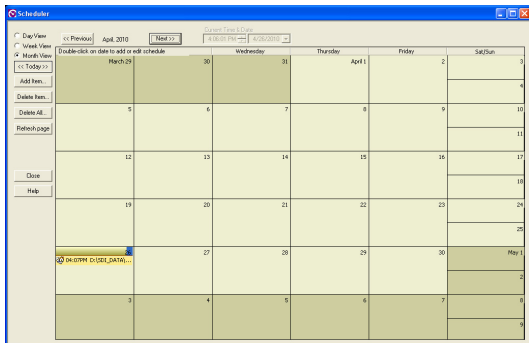
Main GUI



Scheduler – Daily



Scheduler – Weekly



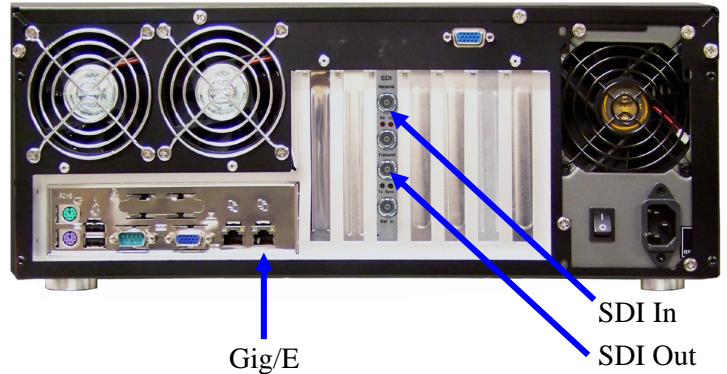
Scheduler – Monthly

Specifications

Standard System

- 4 RU Industrial Computer (Black) with rails
- 3 each 500 GB – SATA HD in RAID 0
- Windows® 7
- LCD front panel touch screen
- SMPTE time code board is used for clock adjustment
- DVD – R/W
- Gig/E – I/O
- Dimensions: 16.5” (W) x 17.625” (D) x 6.5” (H)
(419 mm x 448 mm x 165 mm)

Rear View



Optional RAID System with 12 TB



Ordering Information

- DigiDisk/SDI
 - Standard DigiDisk/SDI in 4 RU rack with 500 GB HD and LCD front panel
- DigiDisk/SDI/RAID
 - External RAID option with 12 TB
- Extended DigiDisk/SDI/EXT/W
 - Extended warranty for two years with Express Drive Exchange

NOTE: No keyboard, mouse, or monitors are shipped with any DigiDisk/SDI.