

DMUX/ASI™

Real Time Transport Stream Demultiplexer (Tuner) for Real Time Forwarding of Selected Programs (PIDs) from Complex Multiprogram MPEG-2 or H.264 Transport Streams. Ideal for Pulling Out Only Selected Programs from Complex Satellite Feeds.



Back Connectors



Front



Features

- Two DVB-ASI inputs
- DVB-ASI output
- Configurable output rate, including exact ATSC 19.4 Mbps
- MPTS in and MPTS or SPTS out
- Tested with MPEG-2 or H.264 type streams
- SD and HD content
- Remote web-based management
- Linux® Based
- Setup and Forget Technology
- Build with Dell or Supermicro workstations

Applications

- Separating multiplexed transport streams
- “Cherry picking” channel line ups for satellite, cable, and telco TV system operators
- “Content grooming” – Convert SD or HD content into a 19.378 Mbps ATSC compliant stream

Specifications

Dimensions	
Width:	3.1” (7.8 cm)
Length:	5.65” (14.3 cm) incl. connectors
Thickness:	1.7” (4.3 cm)
Typical Weight	0.57 lbs (260 g)
Output Connectors	HDMI Type A
Input Connectors	75 Ohm BNC (HD-SDI Video) 75 Ohm RCA (S/PDIF Audio)
Typical Power	600mA at 12V
Operating Temperature	0 to 55 Celsius
Operating Humidity	To 90% non-condensing
Status LED Indicators	Power 1, Power 2

Ordering Information

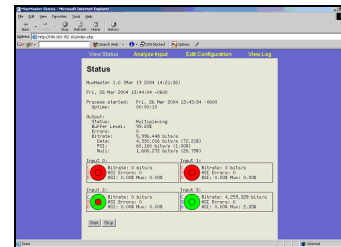
DMUX/ASI
DMUX/ASI/S – SMPTE 310M Output ports

Overview

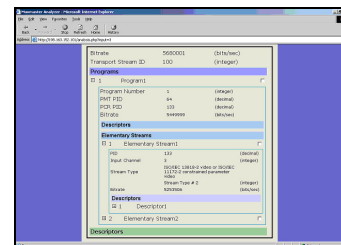
Transport streams are packetized program streams. Multi Program Transport Streams (MPTS) are multiplexes of single transport streams. Multi Program Transport Streams are used to distribute the many streams that provide us many choices for content that is streamed around via cable systems, satellite networks and terrestrial broadcasters. Demultiplexers are devices that perform the opposite of multiplexing. They are used to take apart or “parse” complex streams to less complex streams.

Our DMUX/ASI™ is designed for deployment at either cable head-ends where complex multi-program transport streams of 38 Mbps need to be separated, or to sit in front of land-based ATSC transmitters where they are tasked with demultiplexing SD and HD streams into single 19.378 Mbps ATSC compliant streams. For our ATSC market customers we can supply the DMUX/ASI with either highly accurate DVB-ASI outputs or SMPTE 310M output. Our DMUX also works well with satellite streams. Many customers use it to filter out unneeded services from large transport streams.

GUIs



Status



Program Analysis