

# DCoder HD™

**Very Low Latency Professional Quality MPEG-2 HD Decoder with DVB-ASI and IP Input and MP @ HL Profile with SDI, HD-SDI, or HDMI/DVI Output. MPEG-1 Layer II Audio Out. Ideal Decoder for Commercial High Definition Broadcast Applications. Supports 80 Mbps.**

## Features

- Input: DVB-ASI and GigE IP
- Output: SDI, HD-SDI, or HDMI/DVI
- Supports Latency of 2 Milliseconds
- Input transport stream bit rate up to 100 Mbps
- Supports 4:2:0, 4:2:2 sampling rate
- MP@HL decoding for MPEG-2 transport streams via DVB-ASI input
- Genlockable output
- Audio output: MPEG-1 Layer-II audio encoding, optional Dolby Digital® AC-3
- Program selection from transport stream
- Support for 1080p, 1080i, 720p, 1080 24p and 24PSF formats supported
- Automatic or manual A/V setting
- Compatible with both PAL and NTSC
- Accepts 1080i, 1080p, 720p, and 480i
- Closed captioning pass through
- Stereo audio bit rates to 384 Kbps
- Audio sampling rates: 32K, 44.1K, and 48K samp/sec
- CBR or VBR selectable
- LCD front panel control
- Web-based management
- Boots up in 30 seconds
- Optional two channel mode

## Applications

- Broadcasting at Live Sports Venues
- HD videoconferencing
- Military and law enforcement video surveillance
- Electronic News Gathering



Ships with Mounting Rack



## Overview

MPEG-2 is the defacto broadcast standard in the USA. It is used in cable and over the air broadcasting. In Europe it is also used in DVB-T as the underlying codec.

Low latency is important when videoconferencing is taking place, since delays above a threshold cause the human brain to become tired. Low latency is also important when machines need to be controlled remotely.

The DCoder HD™ is a real time, broadcast grade, very low latency (2 milliseconds), standards compliant, full 1080i or p, 720p, 14 to 80 Mbps, MPEG-2 HD decoder. It is configured as a compact 1 RU stand-alone appliance with DVB ASI and IP input and HD-SDI or HDMI output.

The DCoder HD is ideal for broadcast, HD military surveillance, HD sports origination, HD movie previews, ENG helicopters, HD video conferencing, and other HD content creation purposes where low latency and high definition is desired.



Computer Modules, Inc.

11409 West Bernardo Court

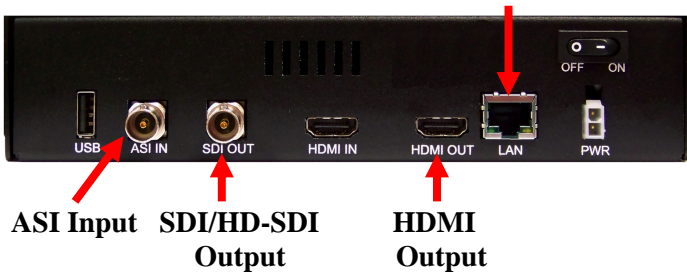
San Diego, CA 92127

Tel: 858-613-1818 Fax: 858-613-1815

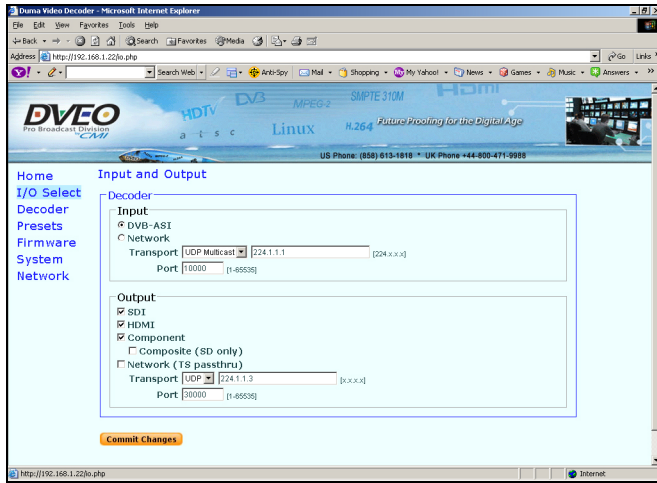
[www.dveo.com](http://www.dveo.com)

# Inputs/Outputs

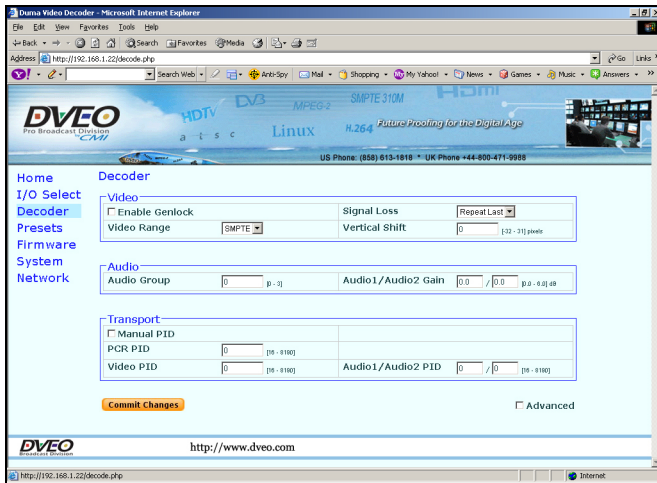
## LAN Connection for GUI and IP Input



## Sample of GUIs



Input and Output Setup



# Ordering Information

DCodec HD  
 DCodec HD AC3 –Optional Dolby Digital® AC-3 audio

© 2012 Computer Modules, Inc. DVEO and DCodec HD are trademarks of Computer Modules, Inc. All other trademarks and registered trademarks are the properties of their respective owners. All rights reserved. Specifications are subject to change without notice.

# Specifications

## Video Decoding

Video Compression:	MPEG-2 4:2:2 or 4:2:0, 1 to 100 Mbps
GOP Structures:	I-Frame, IP, IBP, IBBP, IBBBBP
GOP Length:	1 to 63
Bit Rate:	1.5 to 99.9 Mbps
Packet Size:	188-byte or 204-byte stream packets

## Audio Decoding

Standards:	MPEG-1 Layer-II or MPEG-1 Layer I Optional Dolby Digital® AC-3
Decode Modes:	Stereo, Joint Stereo, Dual Chl., Mono
Channels:	1 Stereo or 2 Single
Stereo audio bit rates:	To 384 Kbps
Audio sampling rates:	32K, 44.1K, & 48K samp/sec
ISO Standards:	ISO/IEC-11172-3 Layer-II and ISO/IEC-13818-2 standards compliant

## Control and Monitoring

Front Panel:	Front panel LCD
Remote:	Two IEEE 802.3 1000/100/10 Base-TX Ethernet interfaces (RJ-45) – 1 for control, 1 for IP input

## Physical and Power

System:	Embedded Linux® OS
Power:	110V, 60W – via “brick”
Rack Mount:	Half 1 RU
Dimensions:	7.75” (W) x 5.875” (D) x 1.75” (H) (197 mm x 149 mm x 44.5 mm)
Weight:	3 lbs. (1.36 kg)
Conformity:	RoHS
Power Supply Conformity:	UL, CSA, CE Mark, RoHS

# Resolutions Supported

- 1920x1080i/psf/p @ 23.98, 24, 25, 29.97, 30, 59.94, 60
- 1280x720p @ 23.98, 24, 25, 29.97, 30, 50, 59.94, 60
- 720x576i/psf/p @ 23.98, 24, 25, 29.97, 30, 50, 59.94, 60
- 720x480i/psf/p @ 23.98, 24, 25, 29.97, 30, 50, 59.94, 60
- SXGA via the HDMI/DVI output
- VGA via the HDMI/DVI output



Computer Modules, Inc.  
 11409 West Bernardo Court  
 San Diego, CA 92127

Tel: 858-613-1818 Fax: 858-613-1815

[www.dveo.com](http://www.dveo.com)